

WILWOOD RACING
wilwood
ESTABLISHED 1977

THE MOST **WIDELY USED BRAKES** IN ALL MOTORSPORTS

**OPEN WHEEL
SPRINT & MIDGET
PRODUCT CATALOG**



wilwoodracing.com



Open Wheel: Sprint & Midget – We’ve Got You Covered!

Welcome to Wilwood’s Open Wheel Brake Kits and Components Catalog. This catalog highlights brake components specific to the Open-Wheel Sprint & Midget racing markets, including disc brake calipers, brake pads, rotors, adapters, pedals, master cylinders, fluids, controls, and other related components.

Since 1977, Wilwood Engineering has been at the forefront of high-performance disc brake technology and is the most widely used brake brand in motorsports. Located in Camarillo, California, Wilwood is proud to be an American manufacturer that designs and builds all its products locally. Our engineering department uses the latest computer-aided design and manufacturing techniques with finite element analysis (FEA), dynamic testing, and cycle test equipment to find higher performance and more reliable solutions to the most difficult braking tasks, racing. Our extensive inventory of proprietary on-the-shelf components permits us to provide very cost-effective solutions to various needs. We have developed a substantial matrix of brake components and engineering techniques that allow us to quickly and reliably create brake systems for almost any application.

This catalog represents a fraction of what we offer, and we’re constantly adding new items. Our complete product line may be browsed on our website, www.wilwoodracing.com, which is the most comprehensive within the racing and performance aftermarket industries. Searching for parts is simple, and if you can’t find what you’re looking for, **please contact:**



Your Wilwood Race Support Professionals

DAVE BRZOZOWSKI

Motorsports Manager
(805) 388-1188 ext. 311
dbrzowski@wilwood.com

GEOFF BUXTON

Open Wheel Sprint/Midget
(805) 388-1188 ext. 106
gbuxton@wilwood.com

DISCLAIMER: Wilwood engineers brake kits and components for a wide variety of racing and high performance driving applications. It is the responsibility of the end user to choose the parts that are best suited for the braking demands encountered by his or her vehicle. Vehicle speed and weight, along with environmental conditions should always be taken into account when selecting and installing the kit or component that’s right for you.

BRAKE KITS

140-17141



Forged Superlite 4 Radial Sprint Inboard Rear Brake Kit

**4-Piston Rear Kit
Spec37 Rotor**
12.19-in Rotor Diameter
0.81-in Rotor Width
Radial Mount Type
Fitment: Sprint

140-15815



Forged Superlite 4 Radial Sprint Inboard Rear Brake Kit

**4-Piston Rear Kit
CI Rotor**
12.19-in Rotor Diameter
1.25-in Rotor Width
Radial Mount Type
Fitment: Sprint

140-15347



Billet Narrow Dynalite Radial Mount Sprint Inboard Brake Kit

**4-Piston Rear Kit
CI Rotor**
12.19-in Rotor Diameter
0.81-in Rotor Width
Radial Mount Type
Fitment: Sprint

140-15346



Billet Narrow Dynalite Radial Mount Sprint Inboard Brake Kit

**4-Piston Rear Kit
Titanium Rotor**
12.00-in Rotor Diameter
0.36-in Rotor Width
Radial Mount Type
Fitment: Sprint

140-17792



Billet Narrow Dynalite Radial Mount Sprint Inboard Brake Kit

**6-Piston Rear Kit
Titanium Rotor**
12.00-in Rotor Diameter
0.36-in Rotor Width
Radial Mount Type
Fitment: Sprint

140-15345



Billet Narrow Dynalite Radial Mount Sprint Inboard Brake Kit

**4-Piston Rear Kit
SAS Rotor**
11.75-in Rotor Diameter
0.81-in Rotor Width
Radial Mount Type
Fitment: Sprint

140-11810



**Billet Narrow Dynalite
Radial Mount Midget
Inboard Brake Kit**

**4-Piston Rear Kit
SAS Rotor**
10.50-in Rotor Diameter
0.78-in Rotor Width
Radial Mount Type
Fitment: Midget

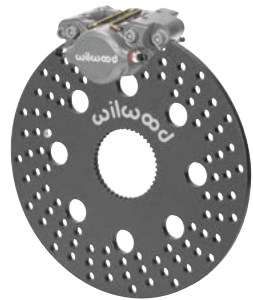
140-11774



**GP320 Sprint Right Rear
Brake Kit**

**4-Piston Rear Kit
SAS Rotor**
10.50-in Rotor Diameter
0.16-in Rotor Width
Lug Mount Type
Fitment: Sprint

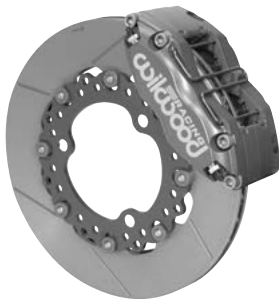
140-13502



**Dynapro Single Right Rear
Sprint Brake Kit**

**2-Piston Rear Kit
Hard Ano Aluminum Rotor**
10.20-in Rotor Diameter
0.31-in Rotor Width
Lug Mount Type
Fitment: Sprint

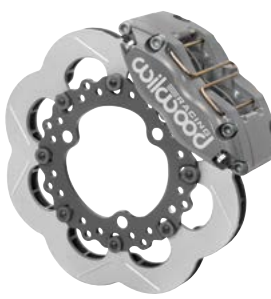
140-14495



**Dynapro Radial Sprint/SC
Pavement Front Kit**

**4-Piston Front Kit
Spec37 RH/LH**
11.75-in Rotor Diameter
0.81-in Rotor Width
Radial Mount Type
Fitment: Sprint

140-15814



**Dynapro Radial Sprint/SC
Pavement Front Kit**

**4-Piston Front Kit
SAS RH/LH**
11.75-in Rotor Diameter
0.81-in Rotor Width
Radial Mount Type
Fitment: Sprint

140-11773



**GP320 Sprint Left Front
Brake Kit**

**4-Piston Front Kit
SAS Rotor**
10.50-in Rotor Diameter
0.16-in Rotor Width
Fitment: Sprint

140-11809



**GP320 Pavement Midget
Front LH-RH Kit**

4-Piston Front Kit
10.50-in Rotor Diameter
0.78-in Rotor Width
Lug Mount Type
Fitment: Midget

140-12957



**Dynapro Single Left Front
Sprint Brake Kit**

2-Piston Front Kit
Steel Rotor
11.00-in Rotor Diameter
0.31-in Rotor Width
Lug Mount Type
Fitment: Sprint

140-12956



**Dynapro Single Left Front
Sprint Brake Kit**

2-Piston Front Kit
Hard Ano Aluminum Rotor
10.95-in Rotor Diameter
0.31-in Rotor Width
Lug Mount Type
Fitment: Sprint

140-16431



**GP200 Left Front Sprint
Brake Kit**

2-Piston Front Kit
SAS Rotor
10.50-in Rotor Diameter
0.16-in Rotor Width
Fitment: Sprint

140-16615



**Dynapro Single Left Front
Sprint Brake Kit**

2-Piston Front Kit
Titanium Rotor
10.20-in Rotor Diameter
0.31-in Rotor Width
Fitment: Sprint

140-12958 | 140-16232



**Dynapro Single Left Front
Midget/Sprint Brake Kit**

2-Piston Front Kit
Hard Ano Aluminum Rotor
10.20-in Rotor Diameter
0.31-in Rotor Width
Fitment: Midget/Sprint

NOTE: Different PN for applications

CALIPERS



Billet NDLR
Pad Plate No. **7816**

1.75 Piston Dia.
120-13405-SI
0.38" Rotor Width

120-13406-SI
0.81" Rotor Width

1.88 Piston Dia.
120-14764-SI
0.38" Rotor Width

120-14765-SI
0.81" Rotor Width



GP200 Caliper
Pad Plate No. **4908**

120-17702
1.25 Piston Dia.
0.25" Rotor Width



GP320 Caliper
Pad Plate No. **6211**

120-15752
1.25 Piston Dia.
0.24" Rotor Width

120-15753
1.25 Piston Dia.
0.81" Rotor Width



Forged Narrow Dynalite
Pad Plate No. **7816**

120-11571-SI
1.75 Piston Dia.
0.38" Rotor Width

120-11572-SI
1.75 Piston Dia.
0.81" Rotor Width



Dynapro Single LW
Pad Plate No. **6812**

120-10188
1.75 Piston Dia.
0.38" Rotor Width



Forged Superlite Internal
Pad Plate No. **7420**

120-11134-SI
1.75 Piston Dia.
0.81" Rotor Width



Dynapro-ST Radial Mount
Pad Plate No. **7816**

120-15453 Thermlock pistons
1.75 Piston Dia.
0.81" Rotor Width



DynaPro Lug Mount
Pad Plate No. **7812**

120-9693-SI
1.75 Piston Dia.
0.81" Rotor Width

120-9695-SI
1.75 Piston Dia.
0.38" Rotor Width



FSL4R/ST Radial Mount
Pad Plate No. **7420**

120-13827
1.88/1.75 Piston Dia.
0.81" Rotor Width

120-13829 Thermlock pistons
1.88/1.75 Piston Dia.
0.81" Rotor Width

120-13264 Thermlock pistons
1.88/1.75 Piston Dia.
1.25" Rotor Width

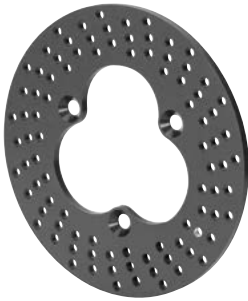


FNSL6R/ST Radial Mount
Pad Plate No. **7416**

120-17508 Thermlock pistons
1.62/1.12/1.12 Piston Dia.
0.38" Rotor Width

ROTORs

ALUMINUM



160-3411A 10.20 Dia.
160-3327A 10.95 Dia.
0.31" Width
Bolt Circle: 3 x 5.00



160-3270A
10.20 Diameter
0.31" Width
Bolt Circle: 42 Tooth



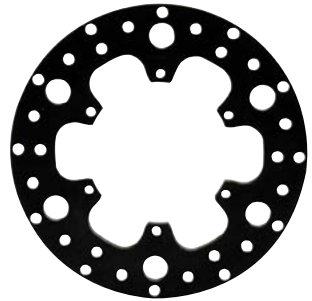
160-13712
7.00 Diameter
0.25" Width
Bolt Circle: 5 x 2.375



160-0525
12.00 Diameter
0.35" Width
Bolt Circle: 8 x 7.00



160-2084
10.95 Diameter
0.31" Width
Bolt Circle: 3 x 5.00



160-3455
10.50 Diameter
0.35" Width
Bolt Circle: 6 x 5.50



160-9773
12.19 Diameter
0.35" Width
Bolt Circle: 8 x 7.00

*Don't see what you're looking for here?
Call Customer Service at
(805) 388-1188
or e-mail
support@wilwood.com*

WARNING!

SPECIAL RACING APPLICATION ONLY.
ALUMINUM ROTORS are unsafe for street use & unsuitable for most forms of Racing. It can result in catastrophic failure when misused.



160-10475
11.00 Diameter
0.31" Width
Bolt Circle: 3 x 5.00

IRON



160-8427
10.50 Diameter
0.75" Width
Bolt Circle: 6 x 5.50



160-5844
12.19 Dia.
0.81" Width
Bolt Circle: 8 x 7.62



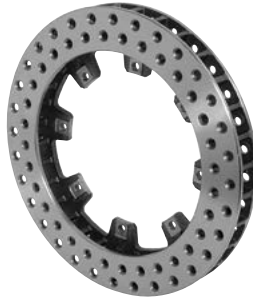
160-3450
10.50 Diameter
0.75" Width
Bolt Circle: 6 x 5.50



160-2894 (R)

160-2895 (L)

12.19 Diameter
1.25" Width
Bolt Circle: 8 x 7.00



160-5863 0.81" Width

160-5864 1.25" Width

11.75 Diameter
Bolt Circle: 8 x 7.00



160-8135 11.75 Dia.

160-8136 12.19 Dia.

0.81" Width
Bolt Circle: 8 x 7.00



160-0471 11.75 Dia.

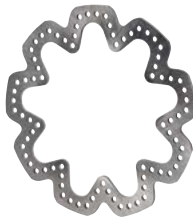
160-5841 11.75 Dia.

160-0277 12.19 Dia.

160-5843 12.19 Dia.

0.81" Width
Bolt Circle: 8 x 7.00

SUPER ALLOY



160-10717
10.50 Diameter
0.16" Width
Bolt Circle: 9 x 7.00



160-13373
11.75 Diameter
0.81" Width
Bolt Circle: 8 x 7.00



160-11217
10.50 Diameter
0.78" Width
Bolt Circle: 6 x 5.50

SPEC-37



160-11835 (R)

160-11836 (L)

12.19 Diameter

1.25" Width

Bolt Circle: 8 x 7.00



160-12293 (R)

160-12294 (L)

12.19 Diameter

0.81" Width

Bolt Circle: 8 x 7.62



160-12283 (R) 11.75 Dia.

160-12284 (L) 11.75 Dia.

160-12289 (R) 12.19 Dia.

160-12290 (L) 12.19 Dia.

0.81" Width

Bolt Circle: 8 x 7.00



160-11839 (R)

160-11840 (L)

12.19 Diameter

1.25" Width

Bolt Circle: 8 x 7.00



160-16869 (R)

160-16870 (L)

11.75 Diameter

0.81" Width

Bolt Circle: 8 x 7.00



160-12285 (R) 11.75 Dia.

160-12286 (L) 11.75 Dia.

160-12291 (R) 12.19 Dia.

160-12292 (L) 12.19 Dia.

0.81" Width

Bolt Circle: 8 x 7.00

TITANIUM



160-16113

10.20 Diameter

0.31" Width

Bolt Circle: 3 x 5.00



160-16114

12.00 Diameter

0.36" Width

Bolt Circle: 8 x 7.00

For more information and technical questions contact:

DAVE BRZOZOWSKI
(805) 388-1188 ext. 311
dbrzozowski@wilwood.com

GEOFF BUXTON
(805) 388-1188 ext. 106
gbuxton@wilwood.com

MASTER CYLINDERS



Compact Remote Side Mount Master Cylinder

- 260-12384** 5/8"
- 260-12385** 3/4"
- 260-12386** 13/16"
- 260-12387** 7/8"
- 260-14790** 15/16"
- 260-12388** 1.00"



Compact Remote Flange Mount Master Cylinder

- 260-10371** 5/8"
- 260-10372** 3/4"
- 260-10373** 13/16"
- 260-10374** 7/8"
- 260-14784** 15/16"
- 260-10375** 1.00"
- 260-10376** 1-1/8"



Compact Remote Side Mount Master Cylinder-Banjo Outlet

- 260-13624** 7/8"
- 260-14793** 15/16"
- 260-13625** 1.00"



Compact Remote Flange Mount Master Cylinder-Banjo Outlet

- 260-13618** 5/8"
- 260-13619** 3/4"
- 260-13620** 13/16"
- 260-13621** 7/8"
- 260-14787** 15/16"
- 260-13622** 1.00"
- 260-13623** 1-1/8"



No-Bleed Quick Disconnect Fitting

Dry Break Quick Connect/
Disconnect -3 AN Fittings

- 260-16771** Kit
- 260-16770** Female
- 260-16769** Male



60 Degree Mount Tru-Bar Pedal

340-14380



Residual Pressure Valve

260-13706 2 psi Blue

DISCLAIMER: Wilwood engineers brake kits and components for a wide variety of racing and high performance driving applications. It is the responsibility of the end user to choose the parts that are best suited for the braking demands encountered by his or her vehicle. Vehicle speed and weight, along with environmental conditions should always be taken into account when selecting and installing the kit or component that's right for you.

Don't see what you're looking for? contact your Wilwood race support professionals

DAVE BRZOWSKI - (805) 388-1188 ext. 311 - dbrzowski@wilwood.com

GEOFF BUXTON - (805) 388-1188 ext. 106 - gbuxton@wilwood.com

COMPONENTS

BRACKET KITS



250-14767

For Billet NDLR Calipers



250-6309

For FSL4R Calipers



250-13179

For Midget Inboard Rear



Brake Pressure Gauge

260-0966



Brake Fluids and Brake Bleed Bottle

290-16353 XR Race-Only

290-6209 EXP 600 Plus

260-16018 Bleed Bottle



270-17649

XRZ Splined hub Kit



230-17887

Rotor Adapter Bolt Kit
Titanium



270-12634

Midget Inboard Hub Kit

270-12635

Sprint Inboard Hub Kit
6 x 5.50 rotor mount



230-14414

Rotor Bolt Kit
Iron, Steel and Titanium Rotor

230-14845

Rotor Bolt Kit
Super Alloy Rotor



300-16454

T-Nuts
Titanium Bobbin Any Rotor

BRACKETS ALSO AVAILABLE

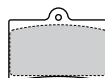
BRAKE PADS



Pad Plate No. 4908

150-12270K Purple

150-28-4908k BP-28



Pad Plate No. 6211

150-40-6211k BP-40

150-28-6211K BP-28

150-13335K Purple



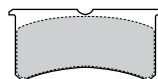
Pad Plate No. 6812

150-40-6812k BP-40

150-28-6812K BP-28

150-20-6812K BP-20

150-9766K Purple



Pad Plate No. 7420

150-45-7420k BP-45

150-40-7420k BP-40

150-28-7420K BP-28

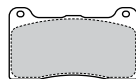


Pad Plate No. 7812

150-45-7812k BP-45

150-40-7812k BP-40

150-28-7812K BP-28



Pad Plate No. 7816

150-45-7816k BP-45

150-40-7816k BP-40

150-28-7816K BP-28

NOTES



P/N: CAT-OWSM | Rev. 10/30/2024



| BRAKE KITS | CALIPERS | ROTORS | MASTER CYLINDERS | PEDALS | PRESSURE VALVES | HATS | BRAKE FLUID |
| BRAKE PADS | HUBS | PROSPINDLES | BRAKE LINES | FLEXLINES | PARKING BRAKES | HARDWARE |



WILWOOD RACING
wilwood
ESTABLISHED 1977

805.388.1188 | wilwoodracing.com |     