

PORSCHE 911 1999-2012

GENERATION 996 / 997



Aerolite Front Brake Kits



Superlite Rear Brake Kits

- Designed to work with OE master cylinder, ABS
- **FRONT:** Aerolite six piston with central stiffening bridge to reduce deflection and improve feel
- **REAR:** Superlite four pistons sized to balance brake bias
- **FRONT:** Oversized 356mm (14.00") x 32mm (1.25") proprietary *Spec37* alloy rotors with forged aluminum mounting hat (Nearly 38mm/1.5" larger than OE)
- **REAR:** Oversized 330mm (12.98") x 28mm (1.10") one-piece iron rotors (31mm/1.22" larger than OE)
- Black E-coated rotors offered in **GTB** slotted, or **SRP** drilled and slotted faces
- Kits include *SmartPad* BP-10 brake pads, caliper brackets, Flexlines, fittings and premium-grade installation hardware

PORSCHE 914 1970-1976

- Rigid, forged aluminum radial mount four piston **POWERLITE** front calipers
- *Spec37* iron alloy rotors with 36 curved vanes in 289mm x 20mm (11.38"x0.81") size available in plain face or E-coat **SRP** drilled and slotted
- Wheel studs are included with the front kits
- Rear kits include **MC4** mechanical parking brake in left and right-hand configuration, plus the needed cable kit
- Kits include *SmartPad* BP-10 brake pads, caliper brackets, Flexlines, and premium-grade installation hardware

NOTE: These brake kits MUST be used with a 19mm master cylinder, as used in the 914/6 or 911.



Powerlite Front Brake Kits



Powerlite Rear Brake Kits

includes Parking Brake

BRAKE PADS

Friction compounds available for all applications, from daily driver to pro racing.



BRAKE FLUIDS



CALIPER COLOR



NOTES



Since 1977, Wilwood Engineering has been a leader in high-performance brake systems and an OEM solutions provider to many industries. All operations, from R&D and manufacturing to distribution and support, are located in the Camarillo, CA headquarters.

QUESTIONS?

For more product information and technical questions, please contact Wilwood Technical Support Team at (805) 388-1188 or email info@wilwood.com

P/N: QF-PORSCHE REV DATE 070924

4700 Calle Bolero
Camarillo, CA 93012
(805) 388-1188



DISC BRAKES
wilwood

FOLLOW US ON:



LEARN MORE



wilwood.com

DISC BRAKES
wilwood

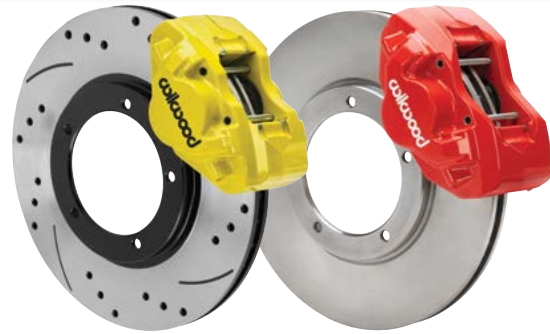
PORSCHE
PRODUCT GUIDE

- BIG BRAKE UPGRADE KITS
- DRUM-TO-DISC CONVERSIONS
- DIRECT-MOUNT CALIPERS
- OE-FIT ROTORS AND PADS



PORSCHE 911

1969-1989



D31/D45 Front Brake Kits



D31 Rear Brake Kits

- Direct replacement brake kits and calipers for classic air-cooled (1969-89) Porsches with 3.00" or 3.50" mounting tabs
- Rigid, forged aluminum, two stainless steel piston calipers with internal crossover tubes
- Calipers finished in gloss Le Mans yellow, gloss black or gloss red powder coat with 23 more color choices (additional charges apply)
- Vented rotors in plain face or black E-coat SRP drilled and slotted in four sizes to match OE
- Brake kits include BP-10 street performance pads (other compounds available)



D31/D45 Calipers

PORSCHE 911

1969-1989

SUPERLITE FRONT BIG BRAKE KITS

310mm (12.19") Rotors

FOR 3.00" OR 3.50" SPACED MOUNTING TABS

- Forged aluminum **SUPERLITE** four piston radial-mount design front calipers are motorsports-proven in many genres of racing.
- Central stiffening bridge bolt is removable for easier pad changes
- Precision-machined, low-distortion, long-grain iron alloy rotors with 32 cooling vanes, mounted to forged aluminum hats.
- Direct bolt-on upgrade for 1969-89 Porsche 911 with no permanent modifications
- 12.19" x 1.10" (310mm x 28mm) vented in plain face or E-coat SRP drilled and slotted rotors



PORSCHE 911

1969-1989

SUPERLITE BRAKE & CALIPER KITS

Fits Front OE Hubs or Rotors



Superlite Caliper Kits

for Factory Rotors Only



TWO KIT SIZES FOR 3.50" SPACED MOUNTING TABS IN 20MM OR 24MM WIDE ROTORS

- Rigid, forged aluminum radial mount four piston **SUPERLITE** front calipers
- Central stiffening bridge bolt is removable for easier pad changes
- Vented rotors available in 11.10" x .80" (282mm x 20mm) or 11.10" x .95" (282mm x 24mm) in plain face or E-coat SRP drilled and slotted rotors
- Two upgrade options: Complete brake kit or caliper kit only
- Fits 15" FUCHS Wheels

PORSCHE 911

1969-1974

POWERLITE BRAKE & CALIPER KITS

Fits Front OE Hubs or Rotors

FOR 3.00" SPACED MOUNTING TABS

- Rigid, forged aluminum radial mount four piston **POWERLITE** front calipers
- Vented rotors 11.10" x .80" (282mm x 20mm)
- Direct bolt-on upgrade for 1969-74 Porsche 911 with no permanent modifications
- Two upgrade options: Complete brake kit or caliper kit only
- Quick-clip style top pad retainer allows faster pad changes and fits inside smaller diameter wheels
- Fits 15" FUCHS Wheels



Powerlite Caliper Kits

for Factory Rotors Only



PORSCHE 911

1969-1989

DYNAPRO BRAKE & CALIPER KITS

for Rear OE Hubs or Rotors



Dynapro Caliper Kits

for Factory Rotors Only



TWO KIT SIZES FOR 3.00" SPACED MOUNTING TABS IN 20MM OR 24MM WIDE ROTORS

- Direct bolt-on upgrade for 1969-89 Porsche 911 with no permanent modifications
- **NDPR-P 4R** calipers provide more piston area, pad area, and pad volume than OE with less weight
- Calipers finished in gloss Le Mans yellow, gloss black or gloss red powder coat with 23 more color choices (additional charges apply)
- Vented rotors available in 11.42" x .80" (290 x 20mm) or 11.42" x .95" (290 x 24mm) in plain face, GT slotted, or E-coat SRP drilled and slotted
- Two upgrade options: Complete brake kit or caliper kit only