

LUG-DRIVE DYNAMIC-MOUNT **AERO6/ST FRONT & AERO4/ST REAR** RACE BIG BRAKE KITS for **C8 CORVETTE**

Wilwood's **AERO6/ST** six piston front and **AERO4/ST** four piston rear calipers are combined with **Lug-Drive** 15.00" dynamic-mount floating *burnished rotors to create the ultimate C8 Corvette big brake package. Precision engineered for true bolt-on factory replacements to provide competitive, race-ready performance using the latest technology. The kits deliver improved heat management with **Thermlock™** pistons, better pedal feel, increased brake torque, and greater thermal capacity without distortion.

KIT FEATURES:

- Complete bolt-on installation that works with the factory master cylinder and on-board computers without modification
- Increased thermal capacity for heavy use without fading or distortion

FRONT CALIPERS: AERO6/ST

- Strong, rigid, stress flow forged aluminum Aerolite 6R/ST caliper with closed central bridge resists deflection for better pedal feel and improved clamping
- **Thermlock** pistons, two-piece stainless steel and aluminum, in Type III hard anodized bores keep heat out of the fluid

REAR CALIPERS: AERO4/ST + EPB

- Strong, rigid, stress flow forged aluminum Aerolite 4R/ST caliper with **Thermlock** pistons sized to maintain proper brake bias
- EPB electric parking brake caliper works with factory switch and on-board computers

**AERO6/ST Front,
GT Slotted Rotor,
Burnished**
[P/N 140-18191](#)

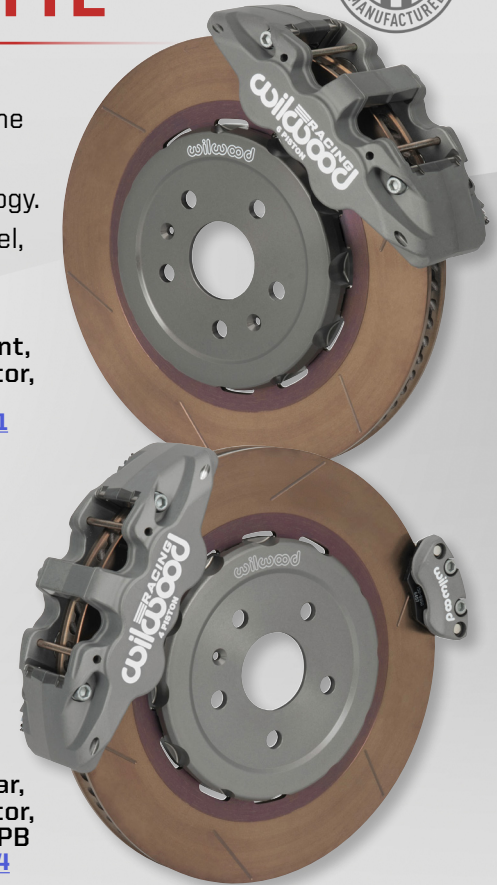
BURNISHED

Proprietary rotor process provides race-ready brakes; no pre-bedding

EPB

Electric Park Brake included in rear kit; integrates with factory system

**AERO4/ST Rear,
GT Slotted Rotor,
Burnished & EPB**
[P/N 140-18194](#)



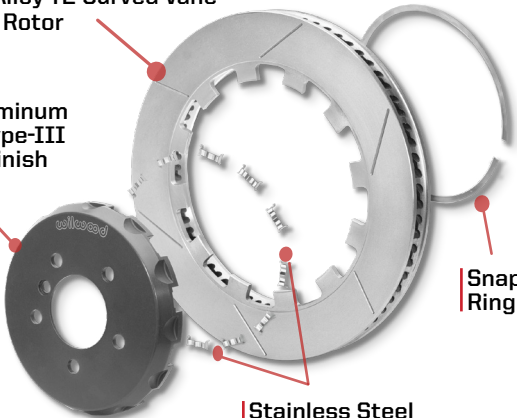
Lug-Drive Dynamic-Mount Technology

Spec37 Alloy 72 Curved Vane Directional Rotor

Forged Aluminum Hat with Type-III Hard Ano Finish

Snap Ring

Stainless Steel Anti-Rattle Wear Plates



ROTORS: **Spec37** GT SLOTTED & BURNISHED

- Dynamic-mount **Lug-Drive** floating rotor system isolates thermally induced stresses between the hat and rotor
- Race-proven **Lug-Drive** system eliminates need for safety wire, thread lockers, bolts, T-nuts or torque wrenches
- Big 15.00" **Spec37** 72 curved vane rotors have more thermal capacity and better cooling for increased performance and longer life
- *Burnishing process removes impurities and oils introduced during machining, ensuring a race-ready, heat-cycled surface

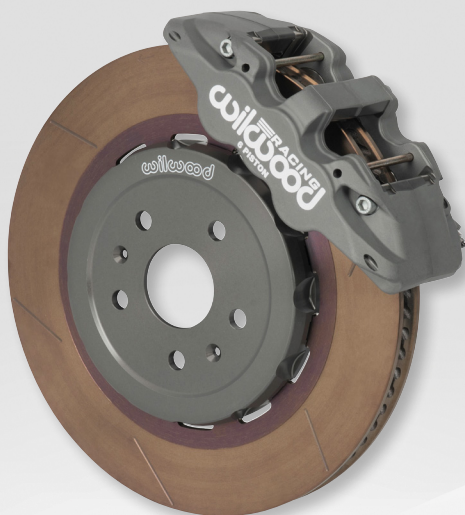
BRAKE PADS: BP-30

- **BP-30** racing pads provide high friction, medium initial response that increases with rotor temperatures (other compounds available)

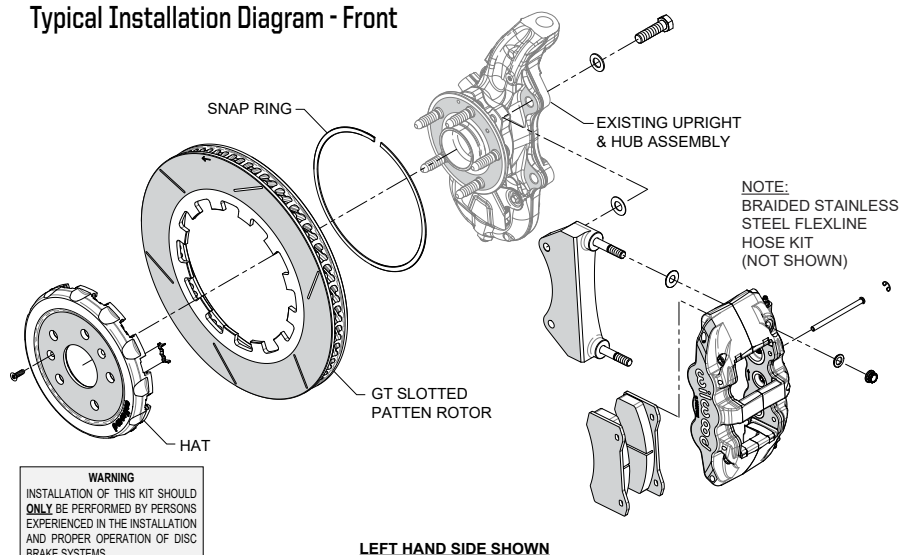
INSTALLATION PARTS:

- Caliper brackets, stainless steel braided Flexlines, and premium-grade installation hardware included

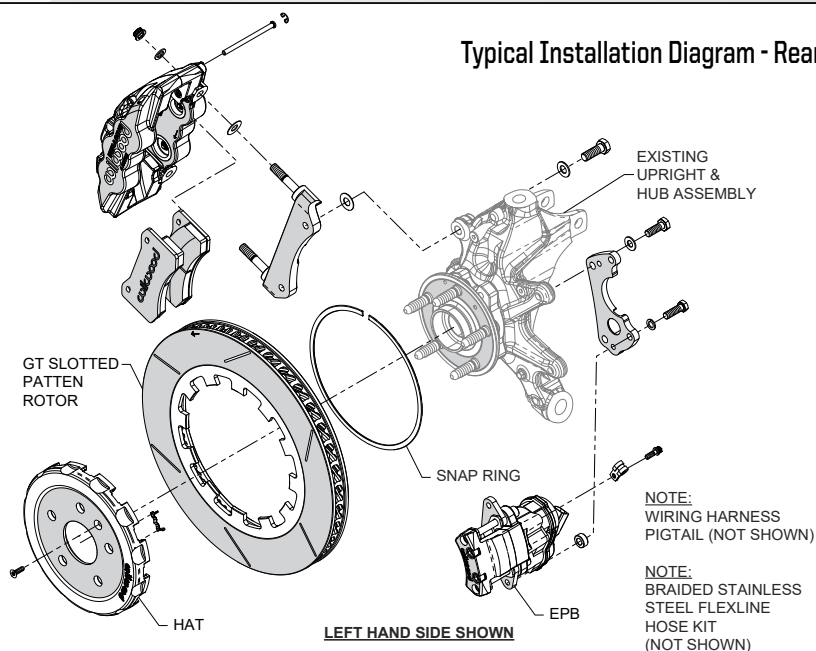
AERO6/ST Front Kits GT Slotted Rotor, Burnished



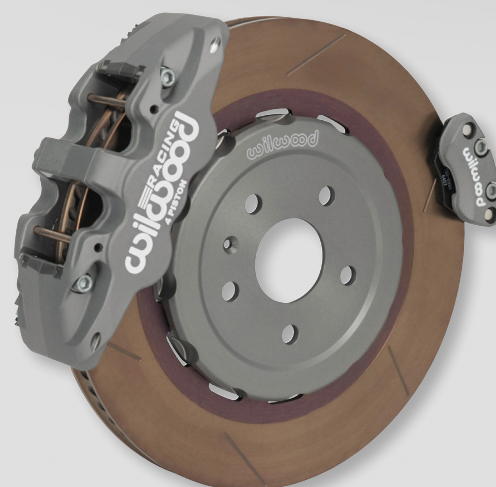
Typical Installation Diagram - Front



Typical Installation Diagram - Rear



AERO4/ST Rear Kits GT Slotted Rotor, Burnished, Electric Parking Brake



ORDERING INFORMATION: PH: 805.388.1188 • FAX: 805.388.4938 • wilwood.com • info@wilwood.com

PART NUMBER	DESCRIPTION	CALIPER TYPE	ROTOR TYPE	ROTOR SIZE
140-18191	Kit, Front Aero6/ST Lug-Drive, 2020-25 C8 Corvette	Aerolite, 6 piston	GT Slotted, 72 Curved Vane, Spec37 , Burnished	15.00" x 1.25"
140-18194	Kit, Rear Aero4/ST Lug-Drive, 2020-25 C8 Corvette	Aerolite, 4 piston + EPB	GT Slotted, 72 Curved Vane, Spec37 , Burnished	15.00" x 1.25"