

GM 2500 TX6R REAR BIG BRAKE KITS 2020-2024

Wilwood now has a rear **TX6R Tactical Xtreme** big brake package to complement the front **TX6-DM** on 2020-2024 GM 2500 trucks. These big brake kits use large 16.00" rotors for increased brake torque and thermal capacity. The **TX6R** six piston clamping force with radial mount stability provides consistent braking power and confidence. Kits fit most 20" and larger wheels.

Drawing from motorsports and military expertise, these rear brake kits are designed for heavy-duty highway, hauling, towing, off-road use, and mountain driving.

KIT FEATURES:

- Same Wilwood components used on tactical armored vehicles weighing up to 14,000 lbs.
- Compatible with the factory master cylinder, ABS and all electronic controls

CALIPERS: TX6R

- Stress-flow forged aluminum **TX6R** calipers with reinforced end bridges for increased rigidity
- Six pistons with differential bores for smoother engagement and more even pad wear
- Available powder coated in gloss black or red; many other color options available (additional charges apply)

ROTORS: GTB SLOTTED

- Large 16.00" x 1.38" military-grade **Spec37** iron alloy rotors with 60 curved vanes to expel heat quickly
- **GTB** slotted with black E-coat protection
- **Spec37** is a proprietary iron alloy that gives these rotors high resistance to thermal distortion with excellent friction and wear characteristics

BRAKE PADS: BP-Q

- **BP-Q** ceramic-based, dual-sport brake pad for everyday street or performance driving (additional compounds available)
- Low wear rate at lower temperatures, and lowest dust and noise

INSTALLATION PARTS:

- Stainless steel Flexlines and premium-grade hardware included

**TX6R - Rear
GTB Slotted Rotor**
[P/N 140-18103](#)



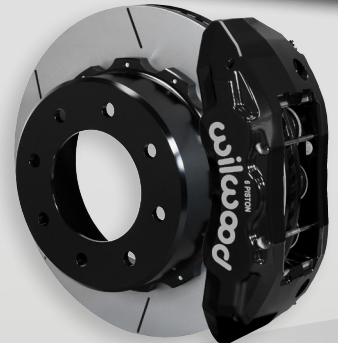
**TX6R - Rear
GTB Slotted Rotor**
[P/N 140-18103-R](#)



GM 2500 TX6R REAR BIG BRAKE KITS 2020-2024



P/N 140-18103-R
Red Powder Coat



P/N 140-18103
Black Powder Coat

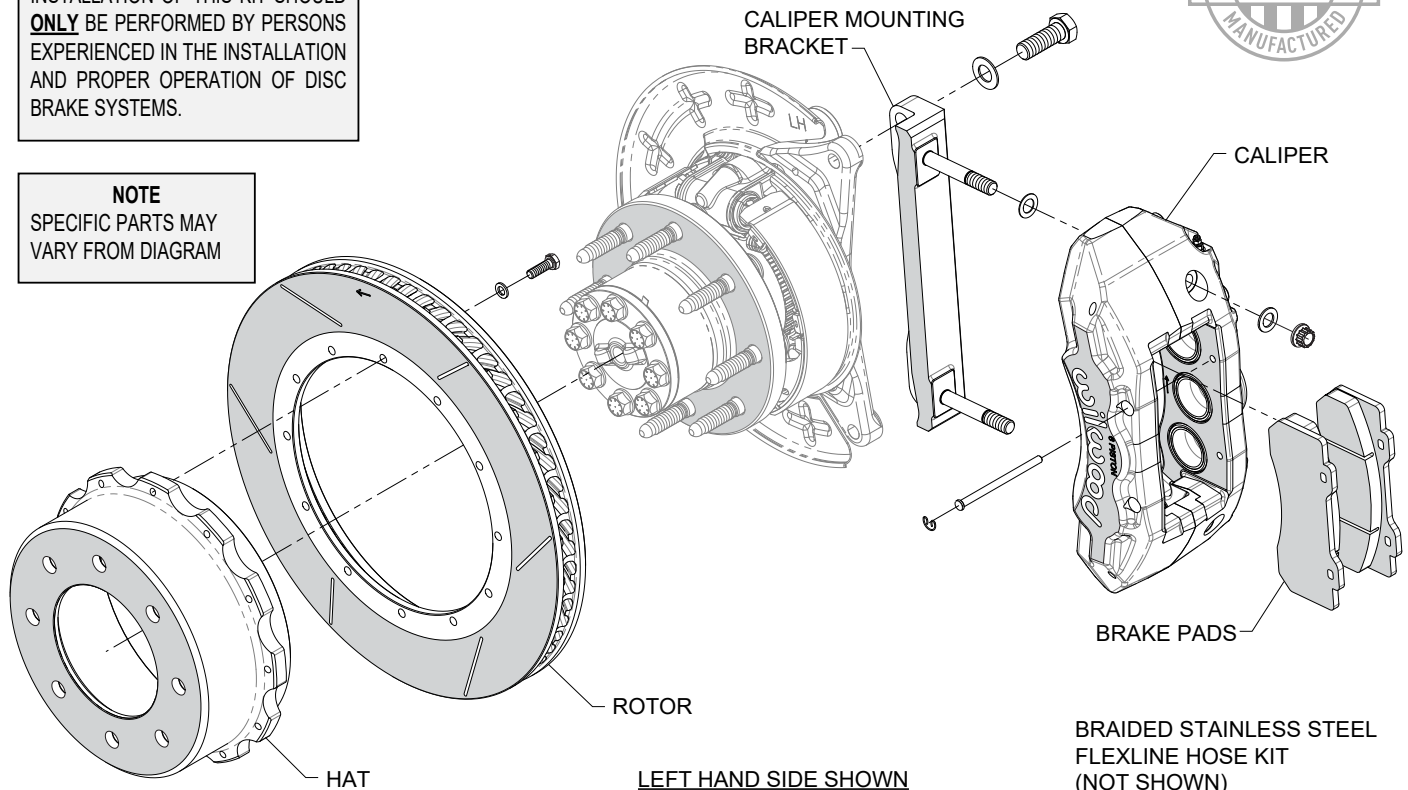
TYPICAL INSTALLATION CONFIGURATION

WARNING

INSTALLATION OF THIS KIT SHOULD **ONLY** BE PERFORMED BY PERSONS EXPERIENCED IN THE INSTALLATION AND PROPER OPERATION OF DISC BRAKE SYSTEMS.

NOTE

SPECIFIC PARTS MAY VARY FROM DIAGRAM



BRAIDED STAINLESS STEEL
FLEXLINE HOSE KIT
(NOT SHOWN)

ORDERING INFO: PH: 805.388.1188 • FAX: 805.388.4938 • wilwood.com • info@wilwood.com

PART NUMBER	DESCRIPTION	CALIPER TYPE	CALIPER FINISH	ROTOR TYPE	ROTOR SIZE
140-18103	Kit, Rear TX6R GM 2500 Trucks 2020-24	Tactical Xtreme 6R	Black Powder Coat	GTB Slotted	16.00" x 1.38"
140-18103-R	Kit, Rear TX6R GM 2500 Trucks 2020-24	Tactical Xtreme 6R	Red Powder Coat	GTB Slotted	16.00" x 1.38"