

FRONT BIG BRAKE HUB KITS CHEVY IMPALA 1959-70

12.88" & 14.00" KITS - Page 1-2
11.00" & 12.19" KITS - Page 3-4

12.88" & 14.00" ROTOR KITS

Wilwood has expanded Impala fitment from 1959 to 1970 using larger rotor options of 12.88" or 14.00" to fit most 17" and 18", and larger wheels using the esteemed radial mount six piston Superlite 6R or Aerolite 6 calipers.

Kits are designed to fit front OE drum or disc spindles, depending on the model. Be sure to follow fitment table on page 2 or check the complete list of compatible Chevrolet fitments, like Bel Air, El Camino, and Corvette in our website links.

KITS FEATURE:

- Complete bolt-on performance upgrade using Wilwood's competition-proven calipers and modern manufacturing technologies
- Fits OE drum and disc brake spindles as specified (see fitment table)
- Big brake power and performance engineered for traditional non-ABS

CALIPERS: FNSL6R & AER06

- Rigid, forged aluminum radial mount six piston calipers
- One-piece stainless steel pistons are housed in Type III hard anodized bores with high-temperature seals for durability
- Calipers offered in gloss red or black powder coat, and 24 optional color choices (additional charges apply)

ROTORS: GTB or SRP

- Wilwood's E-coated GTB slotted, or SRP drilled & slotted faces
- High-performance Spec37 iron alloy with 48 or 72 directional curved cooling vanes

HUBS and HATS:

- Forged and machined billet hubs with screw-on aluminum caps
- Hubs mount to OE spindles using tapered roller bearings and races
- Forged GT competition-style aluminum hats provide ultimate strength for big brake torque with less weight

BRAKE PADS: BP-10

- BP-10 street performance pads provide smooth and consistent response with long wear (other compounds available)

INSTALLATION PARTS:

- Caliper brackets and premium-grade installation hardware included. Flexline kits available separately by application

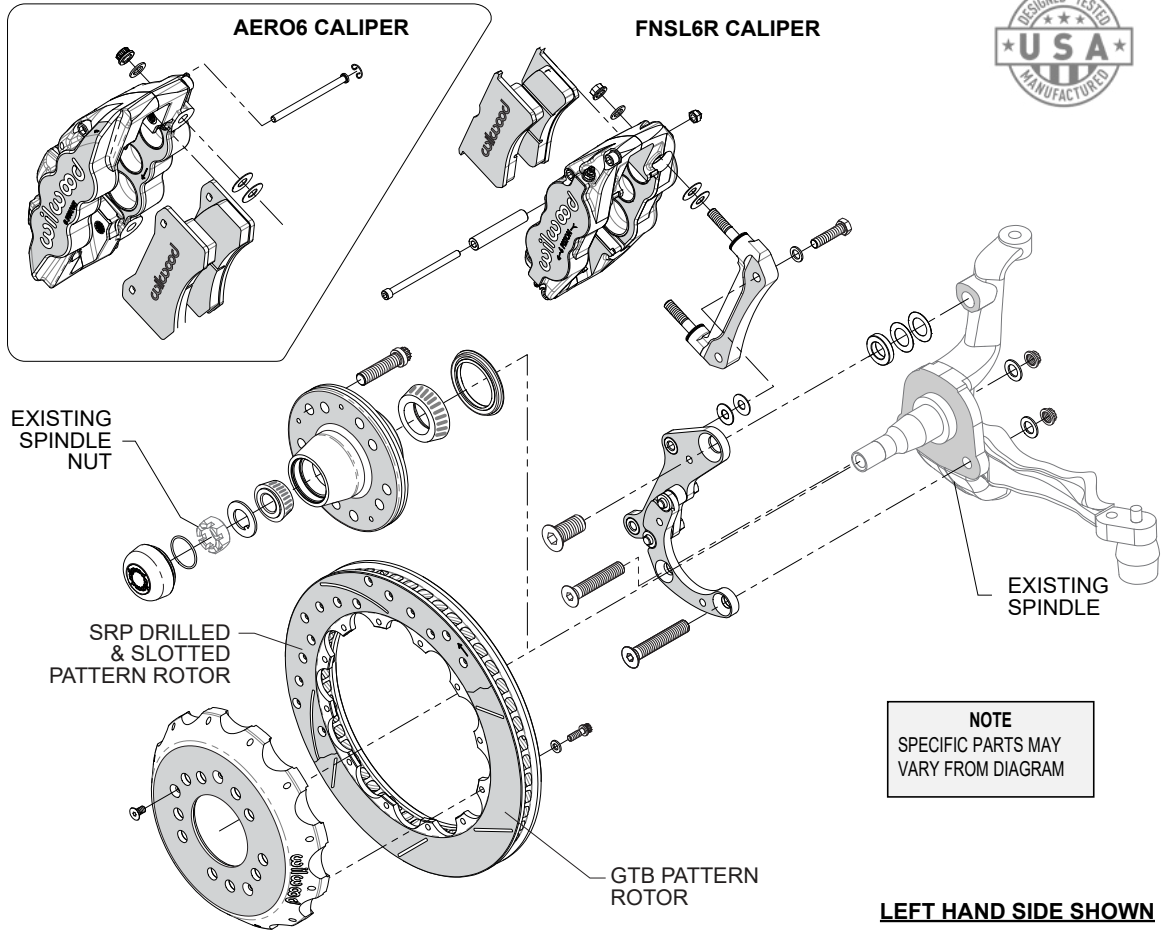


FNSL6R
SUPERLITE
12.88" & 14.00"

AER06
AEROLITE
14.00"



**TYPICAL
INSTALLATION
CONFIGURATION
1959-70 IMPALA
12.88" & 14.00"
FRONT KITS**



WARNING
INSTALLATION OF THIS KIT SHOULD **ONLY** BE PERFORMED BY PERSONS EXPERIENCED IN THE INSTALLATION AND PROPER OPERATION OF DISC BRAKE SYSTEMS.

NOTE:
Flexline kits are available separately and determined by the length needed for your application to provide adequate clearance and retention for brake hose components

NOTE
SPECIFIC PARTS MAY VARY FROM DIAGRAM

ORDERING INFO: PH: 805.388.1188 • FAX: 805.388.4938 • wilwood.com • info@wilwood.com

BLACK	RED	DESCRIPTION	CALIPER TYPE	ROTOR TYPE	ROTOR SIZE
140-12460	140-12460-R	Hub Kit, Front, FNLS6R, Impala 1959-64 Drum Spindle	FNLS6R	GTB Slotted	12.88" x 1.10"
140-12460-D	140-12460-DR	Hub Kit, Front, FNLS6R, Impala 1959-64 Drum Spindle	FNLS6R	SRP Drilled & Slotted	12.88" x 1.10"
140-12465	140-12465-R	Hub Kit, Front, FNLS6R, Impala 1959-64 Drum Spindle	FNLS6R	GTB Slotted	14.00" x 1.10"
140-12465-D	140-12465-DR	Hub Kit, Front, FNLS6R, Impala 1959-64 Drum Spindle	FNLS6R	SRP Drilled & Slotted	14.00" x 1.10"
NEW 140-17736	140-17736-R	Hub Kit, Front, FNLS6R, Impala 1965-68 Drum Spindle	FNLS6R	GTB Slotted	12.88" x 1.10"
NEW 140-17736-D	140-17736-DR	Hub Kit, Front, FNLS6R, Impala 1965-68 Drum Spindle	FNLS6R	SRP Drilled & Slotted	12.88" x 1.10"
NEW 140-17738	140-17738-R	Hub Kit, Front, FNLS6R, Impala 68-70 Disc, 69-70 Drum	FNLS6R	GTB Slotted	12.88" x 1.10"
NEW 140-17738-D	140-17738-DR	Hub Kit, Front, FNLS6R, Impala 68-70 Disc, 69-70 Drum	FNLS6R	SRP Drilled & Slotted	12.88" x 1.10"
NEW 140-17737	140-17737-R	Hub Kit, Front, AERO6, Impala 1965-68 Drum Spindle	AERO6	GTB Slotted	14.00" x 1.25"
NEW 140-17737-D	140-17737-DR	Hub Kit, Front, AERO6, Impala 1965-68 Drum Spindle	AERO6	SRP Drilled & Slotted	14.00" x 1.25"
NEW 140-17739	140-17739-R	Hub Kit, Front, AERO6, Impala 68-70 Disc, 69-70 Drum	AERO6	GTB Slotted	14.00" x 1.25"
NEW 140-17739-D	140-17739-DR	Kit, Front, AERO6, Impala 68-70 Disc, 69-70 Drum	AERO6	SRP Drilled & Slotted	14.00" x 1.25"

FRONT BIG BRAKE HUB KITS, 1959-70 CHEVY IMPALA 11.00" or 12.19" ROTORS

11.00" & 12.19" ROTOR KITS

Wilwood has engineered bolt-on high-performance disc brake upgrade kits for Chevy Impala with OE drum or disc spindles from 1959 to 1970, and Chevy Corvette from 1969-82.

Rotor options are 11.00" or 12.19" with **Dynalite** calipers to fit most 15" to 16" wheels, or **Dynapro** calipers to fit most 16" to 17" wheels and provide more brake torque.

Be sure to follow fitment table on page 4 or check the complete list of compatible fitments and wheel clearance information in our website links.

KITS FEATURE:

- Complete bolt-on performance upgrade using Wilwood's competition-proven calipers and modern manufacturing technologies
- Fits OE drum and disc brake spindles as specified (see fitment table)
- Big brake power and performance engineered for traditional non-ABS

CALIPERS: DYNALITE & DYNAPRO

- Rigid, stress-flow forged aluminum four piston **Dynalite (FDLI)** calipers start at only 3 lbs. and provides super strength against deflection under load
- Forged six piston differential bore **Dynapro (DP6A)** offers pure-bred racing technology with a contemporary design to deliver superior braking and style
- One-piece stainless steel pistons are housed in Type III hard anodized bores with high-temperature seals for durability
- Calipers offered in gloss red or black powder coat, and 24 optional color choices (additional charges apply)

ROTORS: SRP & ULHP

- Wilwood's E-coated **SRP** drilled & slotted faces offer high performance and high styling with directional curved cooling vanes
- High-performance **ULHP** rotors are precision machined to a smooth face finish

HUBS and ADAPTERS:

- Forged and machined billet hubs with screw-on aluminum caps
- Hubs mount to OE spindles using tapered roller bearings and races
- Lightweight machined aluminum adapter plates secure the rotors directly to the hubs

BRAKE PADS: BP-10

- BP-10 street performance pads provide smooth and consistent response with long wear (other compounds available)

INSTALLATION PARTS:

- Caliper brackets and premium-grade installation hardware included. Flexline kits available separately by application



FDLI
DYNALITE
11.00" & 12.19"



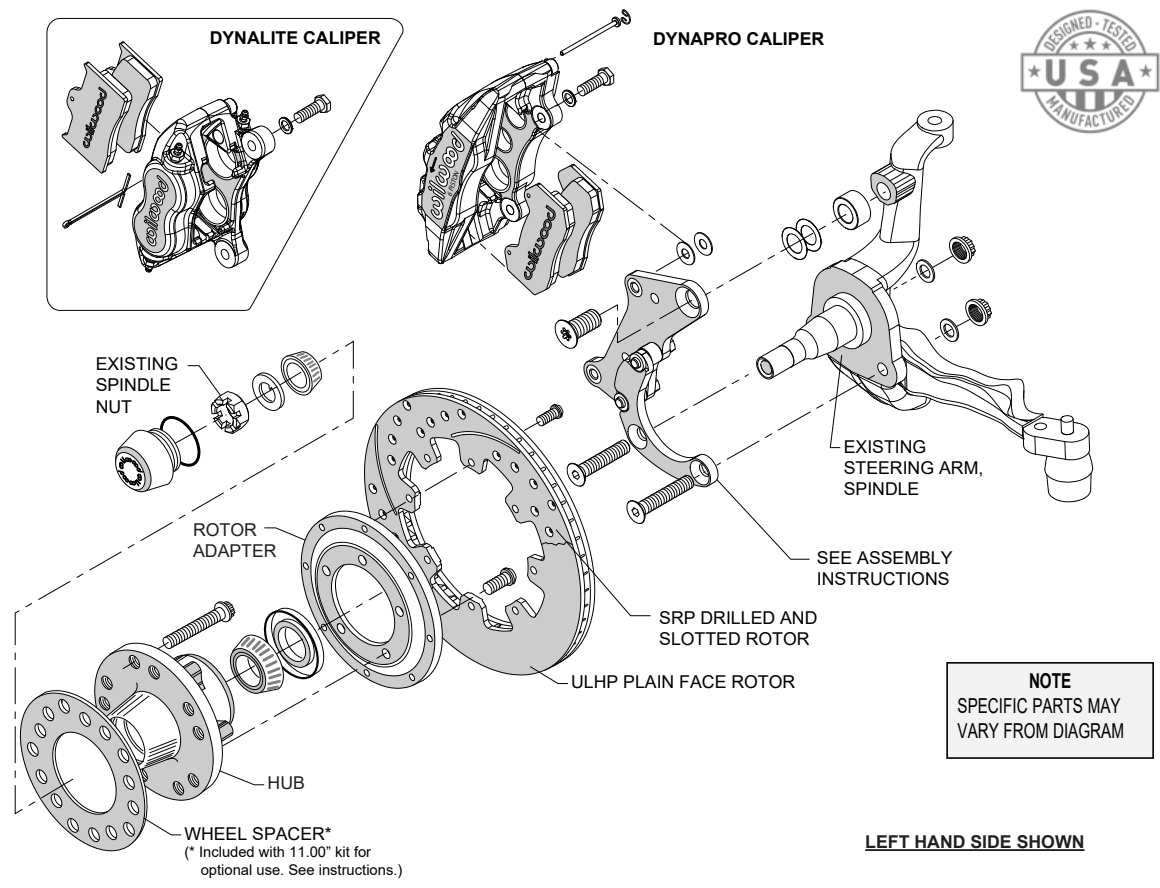
DP6A
DYNAPRO
12.19"



**TYPICAL
INSTALLATION
CONFIGURATION
1959-70 IMPALA
11.00" & 12.19"
FRONT KITS**

WARNING
INSTALLATION OF THIS KIT SHOULD **ONLY** BE PERFORMED BY PERSONS EXPERIENCED IN THE INSTALLATION AND PROPER OPERATION OF DISC BRAKE SYSTEMS.

NOTE:
Flexline kits are available separately and determined by the length needed for your application to provide adequate clearance and retention for brake hose components



NOTE
SPECIFIC PARTS MAY VARY FROM DIAGRAM

ORDERING INFO: PH: 805.388.1188 • FAX: 805.388.4938 • wilwood.com • info@wilwood.com

BLACK	RED	DESCRIPTION	CALIPER	ROTOR TYPE	ROTOR SIZE
140-12458	140-12458-R	Hub Kit, Front, FDLI, Impala 1959-64 Drum Spindle	FDLI	ULHP Plain Face	11.00" x .81"
140-12458-D	140-12458-DR	Hub Kit, Front, FDLI, Impala 1959-64 Drum Spindle	FDLI	SRP Drilled & Slotted	11.00" x .81"
140-12459	140-12459-R	Hub Kit, Front, FDLI, Impala 1959-64 Drum Spindle	FDLI	ULHP Plain Face	12.19" x .81"
140-12459-D	140-12459-DR	Hub Kit, Front, FDLI, Impala 1959-64 Drum Spindle	FDLI	SRP Drilled & Slotted	12.19" x .81"
140-12021	140-12021-R	Hub Kit, Front, FDLI, Impala 1965-68 Drum Spindle	FDLI	ULHP Plain Face	11.00" x .81"
140-12021-D	140-12021-DR	Hub Kit, Front, FDLI, Impala 1965-68 Drum Spindle	FDLI	SRP Drilled & Slotted	11.00" x .81"
140-12022	140-12022-R	Hub Kit, Front, FDLI, Impala 1965-68 Drum Spindle	FDLI	ULHP Plain Face	12.19" x .81"
140-12022-D	140-12022-DR	Hub Kit, Front, FDLI, Impala 1965-68 Drum Spindle	FDLI	SRP Drilled & Slotted	12.19" x .81"
140-12040	140-12040-R	Hub Kit, Front, FDLI, Impala 1968-70 Disc, 1969-70 Drum Spindle	FDLI	ULHP Plain Face	11.00" x .81"
140-12040-D	140-12040-DR	Hub Kit, Front, FDLI, Impala 1968-70 Disc, 1969-70 Drum Spindle	FDLI	SRP Drilled & Slotted	11.00" x .81"
140-12045	140-12045-R	Hub Kit, Front, FDLI, Impala 1968-70 Disc, 1969-70 Drum Spindle	FDLI	ULHP Plain Face	12.19" x .81"
140-12045-D	140-12045-DR	Hub Kit, Front, FDLI, Impala 1968-70 Disc, 1969-70 Drum Spindle	FDLI	SRP Drilled & Slotted	12.19" x .81"
140-12946	140-12946-R	Hub Kit, Front, FDLI, Impala 1968-70 Disc, 1969-70 Drum Spindle	DP6A	ULHP Plain Face	12.19" x 1.10"
140-12946-D	140-12946-DR	Hub Kit, Front, FDLI, Impala 1968-70 Disc, 1969-70 Drum Spindle	DP6A	SRP Drilled & Slotted	12.19" x 1.10"