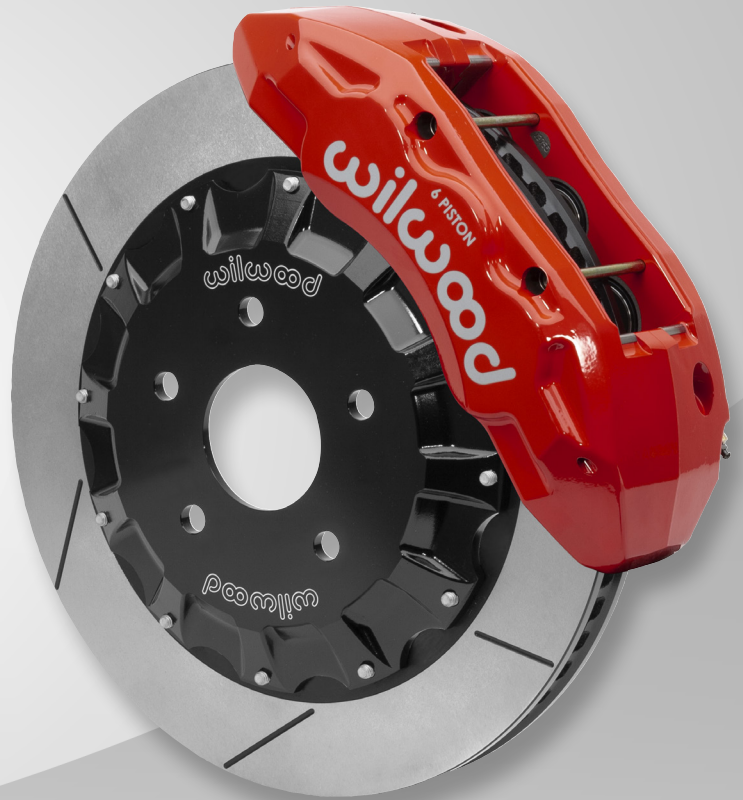


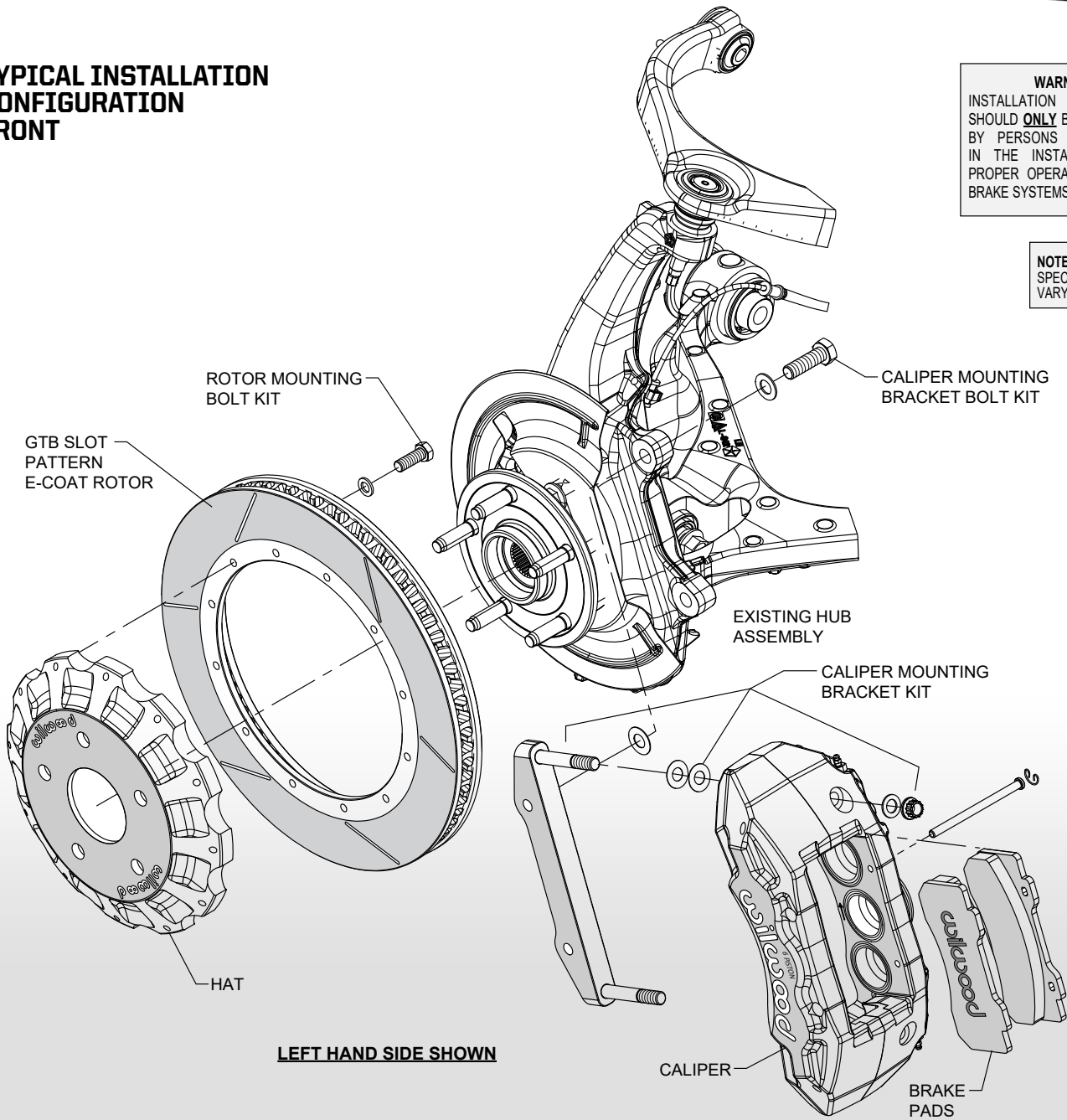
- High-capacity braking for all types of high-demand highway, towing, commercial and heavy-load off-road applications
- **Tactical Xtreme TX6R** six piston forged aluminum calipers with staggered bore stainless steel pistons
- Two-piece rotor assemblies with aluminum hats and 16.00" x 1.38" **Spec37** alloy GTB series black E-coat rotors
- Volume-matched calipers maintain the OE bias and are fully compatible with the factory master cylinder output, ABS system and all electronic controls
- Calipers available in gloss red or black powder coat, or 26 additional color options (additional charges apply)
- Complete kits include high-performance **BP-Q** ceramic compound brake pads, brackets, hardware and DOT approved stainless steel braided flexlines



TYPICAL INSTALLATION CONFIGURATION FRONT

WARNING
INSTALLATION OF THIS KIT
SHOULD **ONLY** BE PERFORMED
BY PERSONS EXPERIENCED
IN THE INSTALLATION AND
PROPER OPERATION OF DISC
BRAKE SYSTEMS.

NOTE:
SPECIFIC PARTS MAY
VARY FROM DIAGRAM



LEFT HAND SIDE SHOWN

ORDERING INFO: PH: 805.388.1188 • FAX: 805.388.4938 • wilwood.com • info@wilwood.com

| PART NUMBER | DESCRIPTION | CALIPER TYPE | ROTOR TYPE | ROTOR SIZE |
|-----------------------------|--|------------------------|------------------------------------|----------------|
| 140-15807 | Kit, Front Tactical Xtreme TX6R, RAM 1500 4X2, 2013-2018 | TX6R Six Piston, Black | GTB Slotted, 72 Vane Spec37 | 16.00" x 1.38" |
| 140-15807-R | Kit, Front Tactical Xtreme TX6R, RAM 1500 4X2, 2013-2018 | TX6R Six Piston, Red | GTB Slotted, 72 Vane Spec37 | 16.00" x 1.38" |
| 140-18207 | Kit, Front Tactical Xtreme TX6R, RAM 1500 4X4, 2013-2018 | TX6R Six Piston, Black | GTB Slotted, 72 Vane Spec37 | 16.00" x 1.38" |
| 140-18207-R | Kit, Front Tactical Xtreme TX6R, RAM 1500 4X4, 2013-2018 | TX6R Six Piston, Red | GTB Slotted, 72 Vane Spec37 | 16.00" x 1.38" |