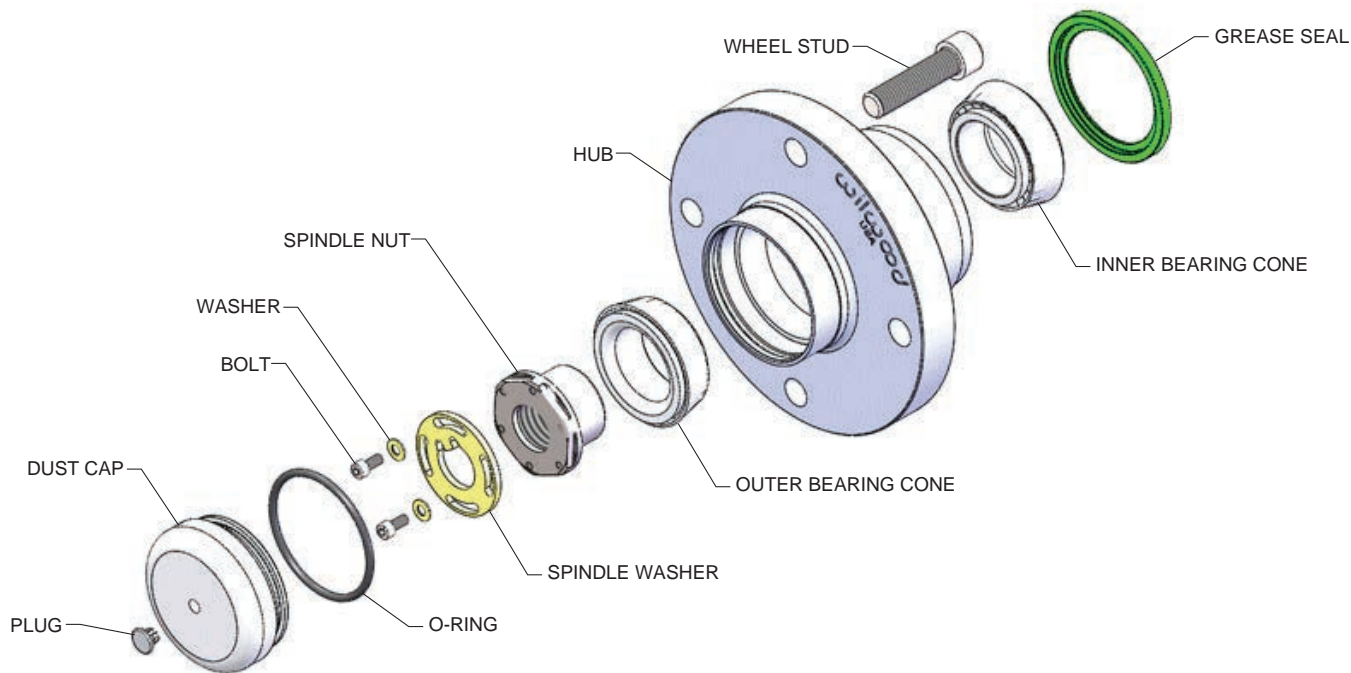


Wilwood Mazda MX-5 Miata Racing ProHub, Dimensional Characteristics



Wilwood Mazda MX-5 Miata Racing ProHub, Typical Assembly

ORDERING INFORMATION: Wilwood Mazda MX-5 Miata Racing ProHub

PART NUMBER	DESCRIPTION	QUANTITY
140-15725	Complete Wilwood Racing ProHub Kit, 1990-2005, 4 x 100mm Stud Bolt Circle	1
270-15624	Hub Assembly, 4 x 100mm Stud Bolt Circle	2
230-15632	Wheel Stud, M12-1.50 x 50mm Long, Socket Head Cap Screw	8
230-15627	Spindle Nut, M20-1.50	2
230-15681	Bolt, 6-32 x .312 Socket Head, Counter Sunk	4
240-15626	Spindle Washer, 18mm	2
240-15682	Washer, .156 I.D. x .312 O.D. x .027 Thick	4
370-15629	Bearing, Inner and Outer Cone, 28mm Bore	4
380-15630	Seal, Grease	2