

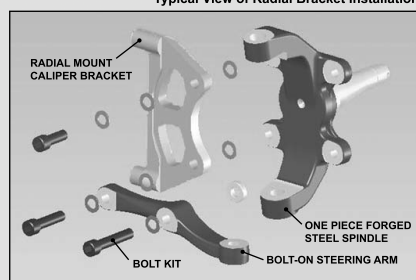
ProSpindles for Ford Mustang II Type Independent Front Suspension

Precision-engineered stock ride height and 2" drop ProSpindle for Mustang II suspension makes installing Wilwood brakes easy on hot rods, kit cars, street rods, drag cars and other custom / competition vehicles. The forged steel ProSpindle is stronger and lighter than factory cast iron with a more rigid steering arm, and a 1/2" taller body for improved camber curve.

Designed with increased strength, reduced weight, improved handling, and more braking capacity. Mustang II ProSpindles use common Pinto and Mustang II wheel bearings, seals, ball joints, and tie rod ends. Choose from stock ride height or 2" drop, and eight different brake kits.

SPINDLE

- Forged steel body is lightweight, yet nearly three times stronger than other OE or aftermarket pressed-pin iron/steel spindles
- 1/2" taller spindle body improves front suspension geometry, providing a higher front roll center and decreased body roll
- Improved bolt-on steering arms are included for typical front steer applications
- Rear steer applications will require custom steering arms to correct Ackerman geometry
- Available in stock ride height or 2" drop



Stock Height Spindle 2" Drop Spindle



ORDERING INFO: PH: 805.388.1188 • FAX: 805.388.4938

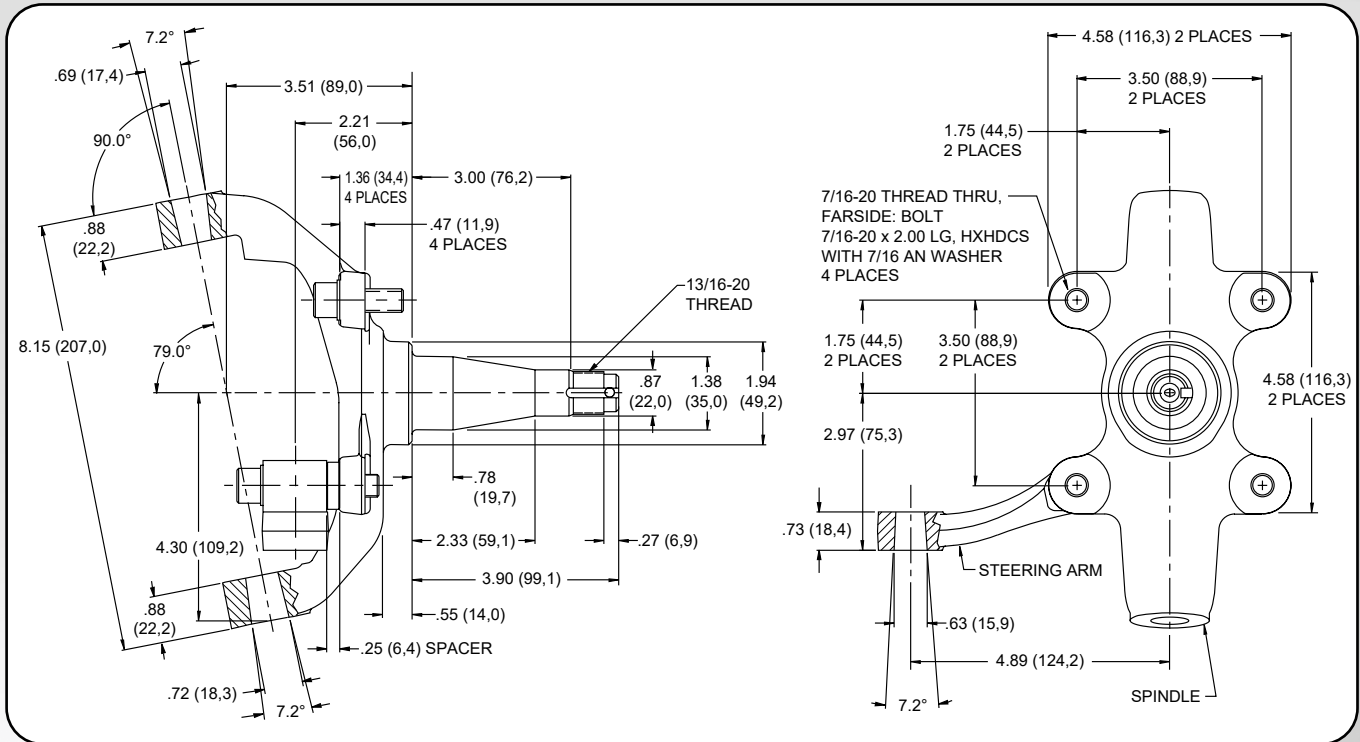
SPINDLE NO.	DESCRIPTION	QTY
830-9807	2" Drop Spindle & Steering Arm	each
830-10832	Stock Height Spindle & Steering Arm	each

BRAKE KITS

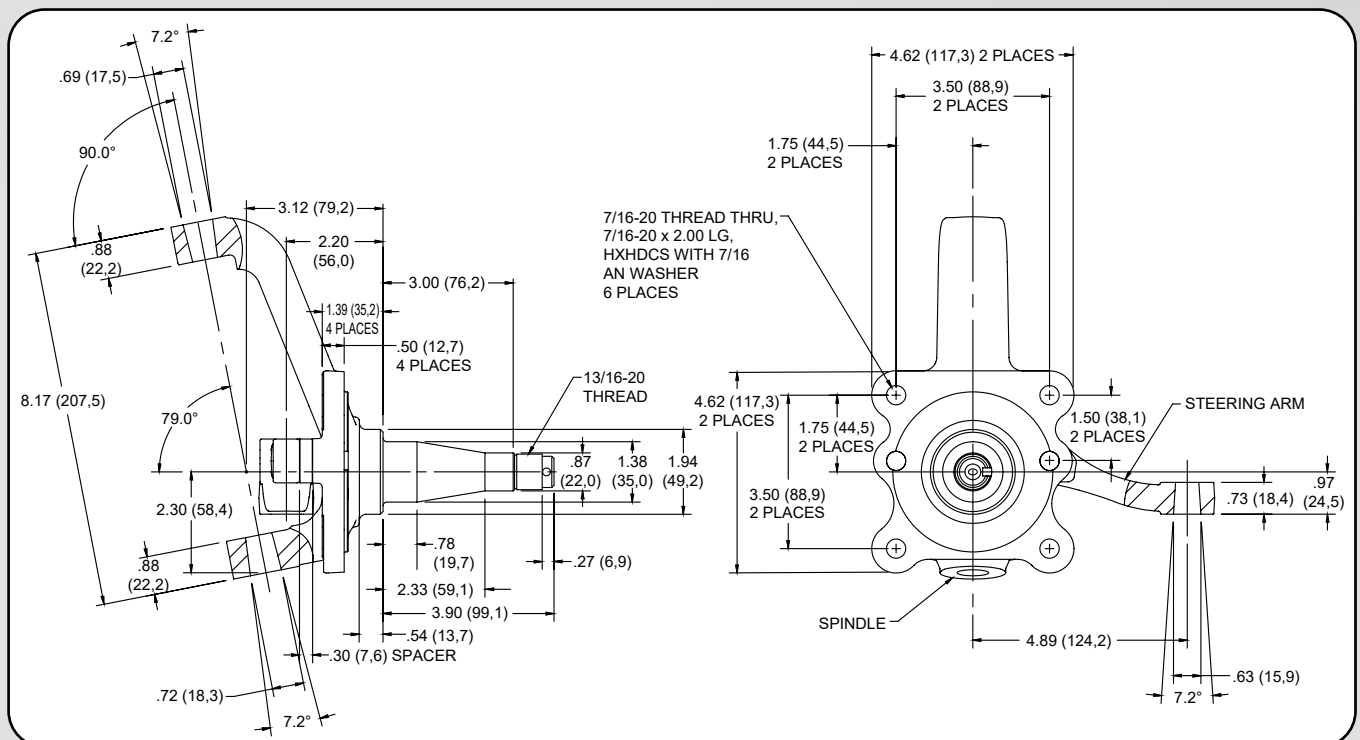
- Integral forged mounting bosses in the main body provide substantially reinforced caliper mounting
- Wilwood street performance brake kits, engineered specifically for the ProSpindle, are available with 11" to 15" diameter rotors and four or six piston calipers

APPLICATIONS

- Street rods and other cars using Mustang II type independent front suspension
- 1974-78 Ford Mustang II
- 1974-80 Mercury Bobcat
- 1971-80 Ford Pinto



Wilwood's 2" Drop ProSpindle Assembly, Mounting Dimensions, P/N [830-9807](#)

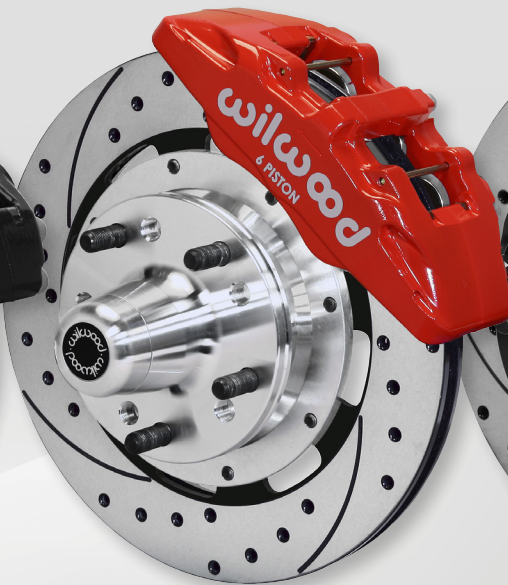


Wilwood's Standard Height ProSpindle Assembly, Mounting Dimensions, P/N [830-10832](#)

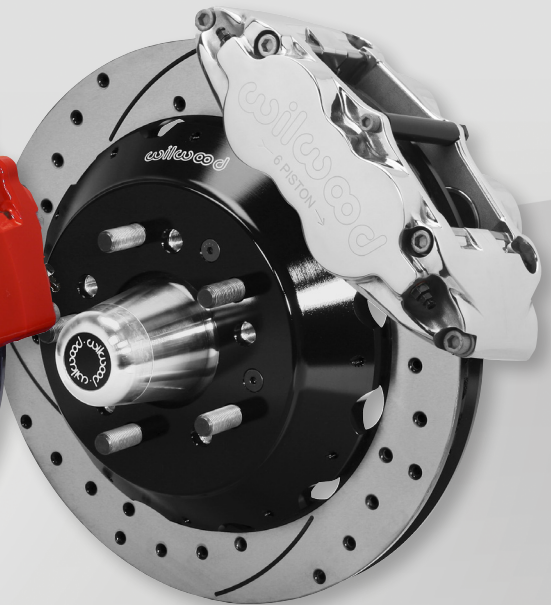
Brake Kits for Wilwood Mustang II ProSpindles



Shown: P/N 140-14065
1-Piece OE-style Hub Rotor
11.03" x .88"



Shown: DynaPro6
12.19" x .81" SRP Drilled &
Slotted Rotor



Shown: Narrow Superlite
12.88" x 1.10" (or 14.00" x 1.10")
SRP Drilled & Slotted Rotor

BRAKE KITS ORDERING INFO: PH: 805.388.1188 • FAX: 805.388.4938 • wilwood.com • info@wilwood.com

PART NUMBER	CALIPER TYPE	CALIPER FINISH	ROTOR STYLE	ROTOR SIZE
140-14065	Dynalite 4 Piston	Black / Red	1-Piece OEM style Hub Rotor	11.03" x .88"
140-9917	Dynalite 4 Piston	Black / Red / Polished	Plain or SRP drilled/slotted	11.00" x .81"
140-13345	Dynapro 4 Piston w/ Dust Seals	Black / Red	Plain or SRP drilled/slotted	11.00" x .81"
140-9918	Dynalite 4 Piston	Black / Red / Polished	Plain or SRP drilled/slotted	12.19" x .81"
140-13346	Dynapro 4 Piston w/ Dust Seals	Black / Red	Plain or SRP drilled/slotted	12.19" x .81"
140-14532 (5 x 5" hub)	Dynalite 4 Piston	Black / Red	Plain or SRP drilled/slotted	12.19" x .81"
140-10741	DynaPro 6 Piston	Black / Red	Plain or SRP drilled/slotted	12.19" x .81"
140-14533 (5 x 5" hub)	DynaPro 6 Piston	Black / Red	Plain or SRP drilled/slotted	12.19" x .81"
140-12276	Narrow Superlite 6 Piston	Black / Red	1-Piece GT slotted or SRP drilled/slotted	12.88" x 1.10"
140-9919	Narrow Superlite 6 Piston	Black / Red / Polished	GT slotted or SRP drilled/slotted	12.88" x 1.10"
140-15155 (5 x 5" hub)	Narrow Superlite 6 Piston	Black / Red	GT slotted or SRP drilled/slotted	12.88" x 1.10"
140-9920	Narrow Superlite 6 Piston	Black / Red / Polished	GT slotted or SRP drilled/slotted	14.00" x 1.10"
140-15410	Narrow Superlite 6 Piston w/Dust Seals	Black / Red	GT slotted or SRP drilled/slotted	14.00" x 1.10"
140-15156 (5 x 5" hub)	Narrow Superlite 6 Piston	Black / Red	GT slotted or SRP drilled/slotted	14.00" x 1.10"
140-10641	Aerolite 6 Piston	Black / Red	GT slotted or SRP drilled/slotted	14.00" x 1.10"
140-15025	Aerolite 6 Piston	Black / Red	GT slotted or SRP drilled/slotted	15.00" x 1.25"