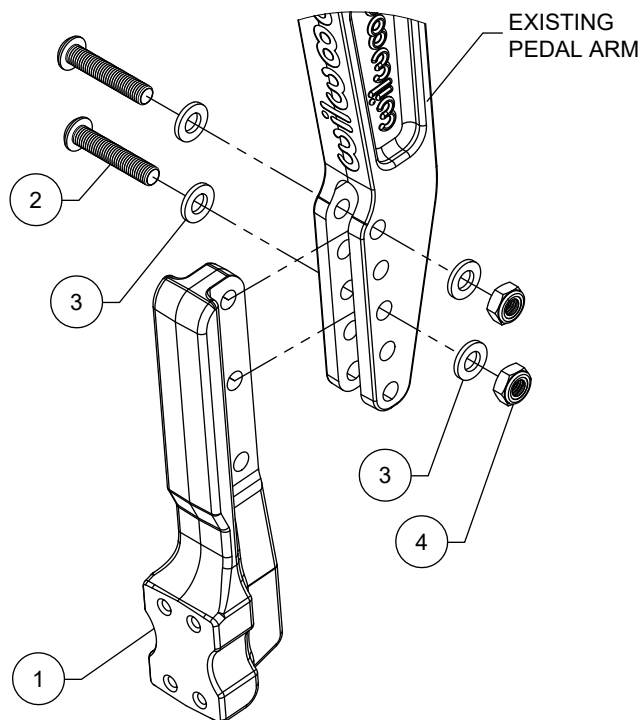


INSTALLATION OF ADJUSTABLE EXTENDED PEDAL HEAD TO WILWOOD PEDAL ARM

BASE PART NUMBER

330-18309



- Install the pedal head (1) into the “fork” of the pedal arm in the desired location as shown in the diagram. Secure in place using bolts (2), washers (3), and locknuts (4).

- Torque locknuts (4) to 120 in-lbs.

- **NOTE:** The Extended Pedal Head will increase existing pedal ratios by approximately 3:1, e.g., 7:1 becomes 10:1.

PARTS LIST

<u>ITEM</u>	<u>PART NO.</u>	<u>DESCRIPTION</u>	<u>QTY</u>
1	330-18307	Pedal Head, Extended, Adjustable Ratio	1
2	230-16369	Bolt, 1/4-28 x 1.25 Long, Button Head	2
3	240-11240	Washer, .265 I.D. x .500 O.D. x .063 Thick	4
4	230-16370	Nut, 1/4-28, Nylock	2

WARNING

INSTALLATION OF THIS COMPONENT SHOULD ONLY BE PERFORMED BY PERSONS EXPERIENCED IN THE INSTALLATION AND PROPER OPERATION OF DISC BRAKE SYSTEMS. IT IS THE RESPONSIBILITY OF THE PERSON INSTALLING ANY BRAKE COMPONENT TO DETERMINE THE SUITABILITY OF THE COMPONENT FOR THAT PARTICULAR APPLICATION. BEFORE OPERATING VEHICLE, TEST THE BRAKES UNDER CONTROLLED CONDITIONS, MAKE SEVERAL STOPS IN A SAFE AREA FROM LOW SPEEDS AND GRADUALLY WORK UP TO HIGHER SPEEDS. DO NOT DRIVE ON UNTESTED BRAKES! ALWAYS UTILIZE SAFETY RESTRAINT SYSTEMS WHILE OPERATING VEHICLE.

4700 Calle Bolero • Camarillo, CA 93012

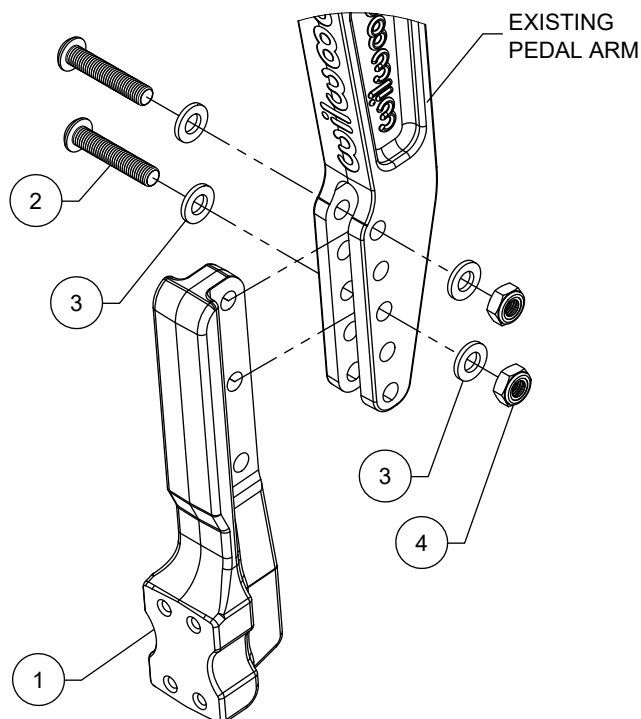
Phone 805 / 388-1188 • www.wilwood.com

DS-1704 REV DATE: 02-09-26

INSTALLATION OF ADJUSTABLE EXTENDED PEDAL HEAD TO WILWOOD PEDAL ARM

BASE PART NUMBER

330-18309



- Install the pedal head (1) into the “fork” of the pedal arm in the desired location as shown in the diagram. Secure in place using bolts (2), washers (3), and locknuts (4).

- Torque locknuts (4) to 120 in-lbs.

- **NOTE:** The Extended Pedal Head will increase existing pedal ratios by approximately 3:1, e.g., 7:1 becomes 10:1.

PARTS LIST

<u>ITEM</u>	<u>PART NO.</u>	<u>DESCRIPTION</u>	<u>QTY</u>
1	330-18307	Pedal Head, Extended, Adjustable Ratio	1
2	230-16369	Bolt, 1/4-28 x 1.25 Long, Button Head	2
3	240-11240	Washer, .265 I.D. x .500 O.D. x .063 Thick	4
4	230-16370	Nut, 1/4-28, Nylock	2

WARNING

INSTALLATION OF THIS COMPONENT SHOULD ONLY BE PERFORMED BY PERSONS EXPERIENCED IN THE INSTALLATION AND PROPER OPERATION OF DISC BRAKE SYSTEMS. IT IS THE RESPONSIBILITY OF THE PERSON INSTALLING ANY BRAKE COMPONENT TO DETERMINE THE SUITABILITY OF THE COMPONENT FOR THAT PARTICULAR APPLICATION. BEFORE OPERATING VEHICLE, TEST THE BRAKES UNDER CONTROLLED CONDITIONS, MAKE SEVERAL STOPS IN A SAFE AREA FROM LOW SPEEDS AND GRADUALLY WORK UP TO HIGHER SPEEDS. DO NOT DRIVE ON UNTESTED BRAKES! ALWAYS UTILIZE SAFETY RESTRAINT SYSTEMS WHILE OPERATING VEHICLE.

4700 Calle Bolero • Camarillo, CA 93012

Phone 805 / 388-1188 • www.wilwood.com

DS-1704 REV DATE: 02-09-26