



CAMARO • 1982-1992 SUPERLITE 6R FRONT BRAKE KITS

Superlite 6R Front Brake kits for the 1982-1992 Chevrolet Camaro combine cutting-edge technology with high-tech styling to deliver track proven endurance and big brake performance for the street, track or show.

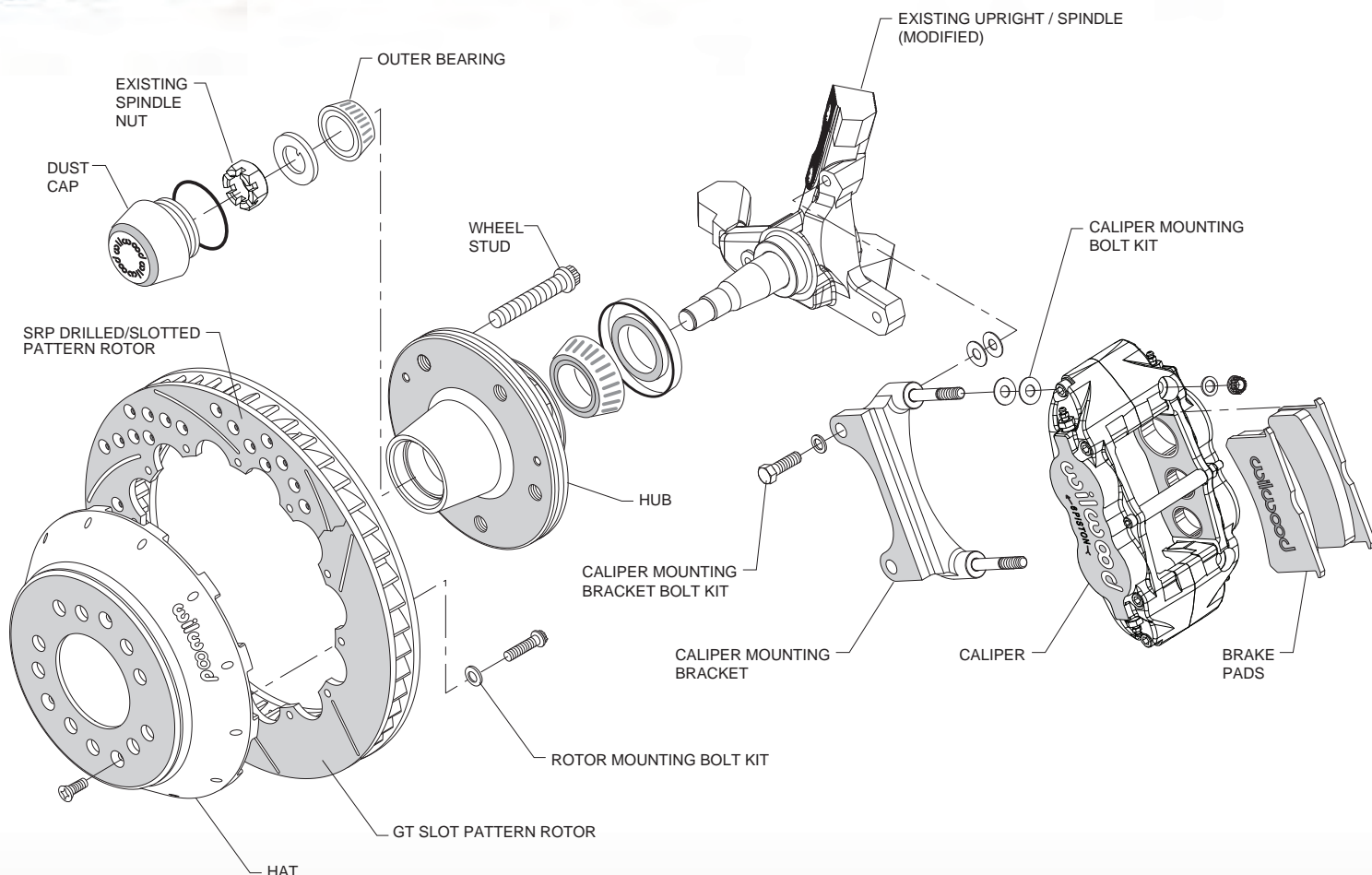


Kit Features



- Superlite six piston radial mount forged aluminum calipers with stainless steel pistons
- Calipers available with choice of gloss red or black powder coat
- BP-10 metallic – composite compound *SmartPads*
- GT slotted or SRP drilled and slotted directional vane rotors in 12.88" or 14.00" diameter
- Forged hubs and hats are strong, lightweight and stylish
- All-inclusive kit complete with DOT approved stainless steel braided flexlines and hardware
- Kits include a detailed guide with step-by-step instructions of the fully bolt-on installation
- Easily configured for dedicated track use with race-only pads and Thermlock® pistons

Note: Wilwood always recommends checking www.wilwood.com for complete year/make/model application data and specific wheel clearance requirements



PLEASE CHECK: WILWOOD ALWAYS RECOMMENDS CHECKING www.wilwood.com FOR COMPLETE YEAR/MAKE/MODEL APPLICATION DATA AND SPECIFIC WHEEL CLEARANCE REQUIREMENTS.

ORDERING INFORMATION: Complete Front Brake Kits for 1982-1992 Chevrolet Camaro

PART NUMBER	DESCRIPTION	CALIPER FINISH
140-15278	Superlite 6R Calipers, 12.88" Spec37 GT Competition Series Rotors	Black Powder Coat
140-15278-D	Superlite 6R Calipers, 12.88" Spec37 SRP Drilled and Slotted Rotors	Black Powder Coat
140-15278-R	Superlite 6R Calipers, 12.88" Spec37 GT Competition Series Rotors	Red Powder Coat
140-15278-DR	Superlite 6R Calipers, 12.88" Spec37 SRP Drilled and Slotted Rotors	Red Powder Coat
140-15279	Superlite 6R Calipers, 14.00" Spec37 GT Competition Series Rotors	Black Powder Coat
140-15279-D	Superlite 6R Calipers, 14.00" Spec37 SRP Drilled and Slotted Rotors	Black Powder Coat
140-15279-R	Superlite 6R Calipers, 14.00" Spec37 GT Competition Series Rotors	Red Powder Coat
140-15279-DR	Superlite 6R Calipers, 14.00" Spec37 SRP Drilled and Slotted Rotors	Red Powder Coat