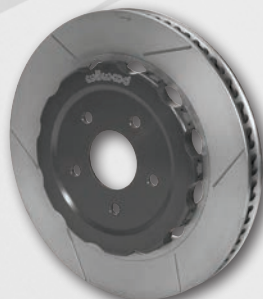




Wilwood offers the industry's most diverse line of extreme-duty, competition-proven brake products for custom applications on purpose-built competition vehicles.

CALIPERS

ROTORS & HATS



PEDAL ASSEMBLIES

BRAKE FLUID



BRAKE PADS



FLUID CONTROLS, HARDWARE KITS, AND MORE!

Visit wilwood.com or contact the Wilwood tech line for assistance at 805.388.1188



SUBARU BUYERS GUIDE FOR STREET & TRACK

**IMPREZA
WRX
WRX STI
FORESTER
LEGACY
OUTBACK
BRZ**

NOTES



4700 Calle Bolero
Camarillo, CA 93012
(805) 388-1188 | wilwood.com

Follow us on:



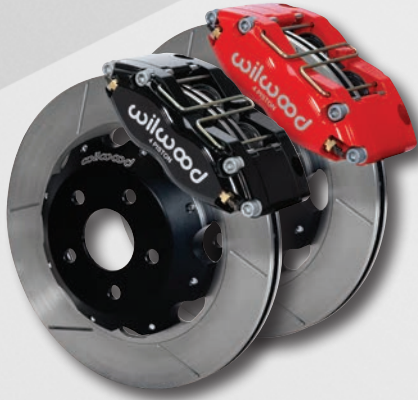
**SUBARU
PRODUCT GUIDE**



DYNAPRO 4R FRONT BRAKES

Upgrade your street performance application to 12.00" rotors, four piston calipers, and high-tech styling with this lightweight design fitting a variety of 15" wheels.

- Forged radial mount DynaPro 4R calipers
- Options for SRP drilled and slotted or **Spec37** GT series directional vane rotors
- High-performance BP series *SmartPads*



SUPERLITE 6R FRONT BRAKES

Fortify your dual-sport custom street machine with increased stopping power and added cooling capacity for 17" and 18" wheel and tire upgrades.

- Forged radial mount FNSL6R calipers
- Choice of 13.06" or 14.00" diameter rotors
- High-performance BP series *SmartPads*



AEROLITE 6R FRONT BRAKES

Get the absolute maximum in big braking power, cooling capacity, and high-tech design with these six piston, 14.00" rotor kits.

- Forged radial mount Aerolite 6R calipers
- Options for SRP drilled and slotted or **Spec37** GT series directional vane rotors
- High-performance BP series *SmartPads*



DYNAPRO 4 REAR BRAKES

Complement your wheel, tire, suspension, and front brake upgrades with a DynaPro four piston rear kit on select models/years using the OE parking brake.

- Forged radial mount DynaPro four piston calipers
- Choice of 12.19" or 12.88" diameter rotors
- High-performance BP series *SmartPads*



SUPERLITE 4R REAR BRAKES

Get matched appeal and balanced performance with four piston rear kits designed and engineered for use with 13.06" or 14.00" rotor front kits.

- Forged radial mount FNSL4R calipers
- Options for SRP drilled and slotted or **Spec37** GT series directional vane rotors
- High-performance BP series *SmartPads*



PROMATRIX BRAKE PADS FOR OE CALIPERS

Get the ultimate dual-sport driving experience from your factory-equipped brakes with these exclusive improved friction-formula brake pads.

- Direct OE-fit available for a wide range of select sport and base model vehicles
- Increased stopping power with positive response for all types of street driving
- Extended temperature range and high resistance for trips to the tracks



NOTE: Upgrades for high temperature, extended duty track use available for all kits. Contact the Wilwood tech line at 805.388.1188 for more information