

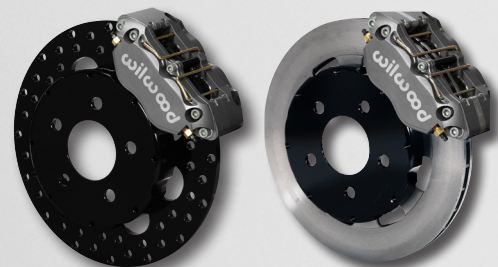
DRAG RACE BRAKE KITS

Durability and consistent performance, in an overall weight-saving design, are the standards in every Wilwood-engineered drag race kit.

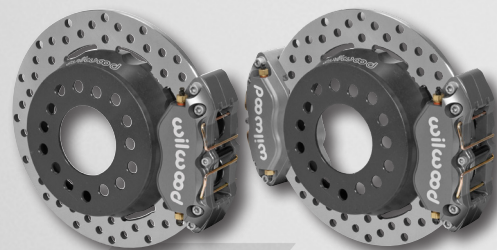
STEEL ROTOR FRONT BRAKE KITS



STEEL ROTOR AND VENTED IRON FRONT BRAKE KITS



SINGLE AND DUAL CALIPER REAR KITS



SPECIAL APPLICATION BRAKES

Wilwood offers a full range of front and rear drag race brake kits covering nearly every year of front spindle and all of the most popular OE and specialty rear axles. Consult our website or call our tech line for specific application information.

PROSPINDLES / MUSTANG II

The widespread use of the 1974-'78 Mustang II suspension platform led to the development of these superior strength forged steel spindles.

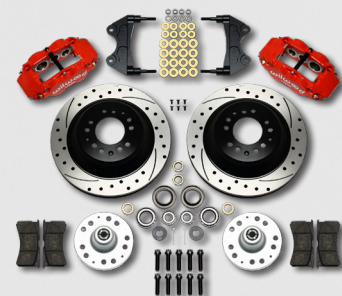
- 3X stronger than standard cast spindles
- Tall-body design for better geometry
- Fortified caliper mount bosses
- Available in stock height or 2" drop
- Direct-fit, bolt-in replacement for OE



PROSPINDLE FRONT BRAKE KITS

Brake kits for ProSpindles include the unique mount brackets necessary to securely attach the calipers to the fortified ProSpindle body.

- 14 kit models available
- Rotor diameter options from 11.00" to 15.00"
- Four and six piston calipers



CUSTOM APPLICATION BRAKE OPTIONS

Wilwood offers custom services covering options from powder coat caliper colors to track-fortified kits for most years and models. Call our tech line.

MASTER CYLINDERS AND CONTROLS

Tandem master cylinders and bias controls will fine-tune the brake performance on all manual or vacuum boost power systems.

NEW



BRAKE PADS

Wilwood offers multiple options of brake pads for most applications. All will improve performance over original equipment. To find the best pad for your vehicle visit our website or call our tech line.



PROMATRIX BRAKE PADS

- Ultimate replacement pads for OE calipers
- Dual-sport performance for street and track events

smartpad

- Compatible with all rotors
- Varying uses from street to dedicated competition
- Four compounds ranging in friction value and temperature range



PolyMatrix DISC BRAKE PADS

- Rotor- and driver- friendly compound for the street, drag strip and track

DISC BRAKES
wilwood

MUSTANG BUYERS GUIDE FOR STREET & TRACK

1965-2020

- Big brake upgrade kits
- Drum-to-disc conversions
- Master cylinder kits
- Hydraulic controls
- Flexline kits
- OE-fit brake pads

NOTES



DISC BRAKES
wilwood

MUSTANG PRODUCT GUIDE



4700 Calle Bolero
Camarillo, CA 93012
(805) 388-1188 | wilwood.com

Follow us on:



REV 1B-062020

CLASSIC SERIES FRONT BRAKE KITS

One-piece cast rotor assemblies and four piston calipers mount to the stock drum or disc brake spindles on classic-era V8 cars with 5-lug wheels.

- Dynalite-M four piston aluminum calipers
- Smooth or SRP drilled 11.30" diameter rotors
- Fits most factory 14" disc brake wheels



1965-'73

SUPERLITE 6R FRONT HUB & HAT KITS

SUPERLITE 6R W/ HAT

- Superlite 6R six piston calipers
- Built for 17" and larger wheels
- Choice of 12.88" or 14.00" diameter rotors

1965-'73



SUPERLITE 6R W/ HUB

- Superlite 6R six piston calipers
- For traditional non-ABS spindles
- Choice of 12.88" or 14.00" diameter rotors

1965-'78

PRO SERIES FRONT BRAKE KITS

A complete front hub, rotor and caliper kit. Ideal for drum-to-disc conversions on street or show custom applications, or as a lighter-weight alternative to stock for the drag strip.

- Dynalite or DynaPro four piston calipers
- Forged aluminum Pro Series hub assemblies
- Rotor diameter options from 11.00" to 12.19"



1965-'73

AEROLITE 6R FRONT HUB & HAT KITS

AEROLITE 6R W/ HAT

- Aerolite 6R six piston calipers
- Full OE equipment compatibility
- Rotor diameter options from 14.00" to 15.00"

1965-'73



AEROLITE 6R W/ HUB

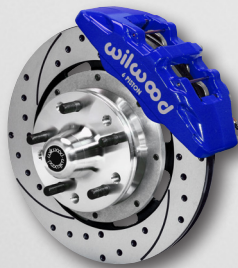
- Aerolite 6R six piston calipers
- Full OE equipment compatibility
- Rotor diameter options from 14.00" to 15.00"

Wilwood ProSpindle

DYNAPRO 6A FRONT BRAKE KITS

Get big-brake stopping power and high-tech style to complement wheel and tire upgrades on your custom show or performance street machine.

- DynaPro 6A six piston forged billet calipers
- 12.19" diameter vented smooth or drilled rotors
- Mounts direct to the OE non-spindle

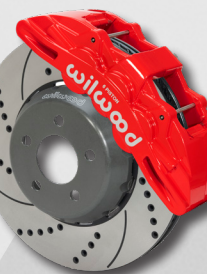


1965-'73

SX6R FRONT BRAKE KITS

It is the largest dual-purpose caliper Wilwood has produced, providing big-brake performance for show and dual-purpose street and track vehicles.

- Dual-purpose Speed Xtreme SX6R six piston calipers
- Choice of 14.00" or 15.00" diameter rotors
- Dynamic mount, slotted or drilled and slotted two-piece rotors



2015-'19/20

CARBON-CERAMIC BRAKE KITS

Front brake kits offer an extreme performance upgrade featuring WCCB carbon-ceramic, dynamic mount rotors with Wilwood's exclusive bobbin-mounting system.

AEROLITE 6R WCCB - CARBON-CERAMIC

- Aerolite 6R six piston calipers
- Dynamic mount 14.00" rotors
- Full OE equipment compatibility

2005-'14



24 COLOR OPTIONS AVAILABLE

SPEED XTREME SX6R - CARBON-CERAMIC

- Speed Xtreme SX6R six piston calipers
- Dynamic mount, two-piece rotors
- Choice of 14.00" or 15.00" diameter rotors

2005-'19/20



REAR AXLE BRAKE KITS

Complement the style and performance of the front brakes on your custom street or high powered track machine with a matching rear axle disc brake conversion upgrade kit.

ELECTRIC PARKING BRAKE KITS



NEW

MECHANICAL PARKING BRAKE KITS



INTERNAL DRUM PARKING BRAKE KITS



SPECIAL APPLICATION BRAKES

Wilwood offers the broadest range of application-specific rear axle kits in a wide variety of styles and sizes based on model year, axle flange type and offset. Consult our website or call our tech line for availability and ordering informations.

24 COLOR OPTIONS AVAILABLE

ROAD RACE BRAKE KITS

More than 40 years of racing knowledge goes into every component. Brake kits and pads are available for most applications.

SUPERLITE 12.19" 4R ROAD RACE BRAKE KITS



SUPERLITE 12.88" 4R ROAD RACE BRAKE KITS



AEROLITE 14"/15" ROAD RACE BRAKE KITS

