

DIRECT MOUNT CALIPER KITS

Forged aluminum bodies, stainless steel pistons, internal in-bore seals and the rugged durability of a Wilwood racing caliper. Wilwood direct-fit kits provide classic styling and superior performance with OE-dimension rotors in the stock location.

D8-4 AND D8-6 CALIPERS

- Four or six piston front, four piston rear
- Choice of red or black powder coat or hard anodize finish
- Includes ProMatrix pads and lines

C2 '65-'67*

C3 '68-'82

*w/OE discs



SLC56 FRONT CALIPERS

- Four piston, fixed mount design
- Choice of red or black powder coat finish
- Use with OE 12.80" diameter rotors

C5 All Models

C6 Base Models



DPC56 REAR CALIPERS

- Four piston, fixed mount design
- Choice of red or black powder coat finish
- Use with OE 12.00" diameter rotors

C5 All Models

C6 Base Models



AEROLITE 6R FRONT CALIPER KITS

- Six piston, big rotor upgrade kit
- Use with 13.40" or 14.00" C6 rotors
- Choice of red or black powder coat, or hard anodize finish

C5 All Models

C6 All Models



SUPERLITE 4R REAR CALIPER KITS

- Four piston, big rotor upgrade kit
- Use with 13.00" OE C6 Z51 rotors
- Choice of red or black powder coat, or hard anodize finish

C5 All Models

C6 All Models



PERFORMANCE BRAKE PADS FOR OE CALIPERS

Get ultimate performance from your OE calipers with rotor- and driver-friendly ProMatrix pads for dual-sport street machines, or PolyMatrix race-only pads for dedicated competition applications.

- Street- and track-proven compounds
- FMSI specification OE dimensions
- Compatible with all iron alloy rotors

C2 '65-'67*

C3 '68-'82*

C4 '88-'96

C5 All Models

C6 All Models

C7 Select Models

*w/Single pin



SRP OE-FIT PERFORMANCE ROTORS

Certified grade iron alloys, cast exclusively in Wilwood tooling then precision machined for exact OE fit, produce these premium quality, high-tech styled street performance rotors.

- Directional drilled and slotted design
- E-coat finish to resist corrosion
- Precision machined dimensional fit

C2 '65-'67*

C3 '68-'82

C5 All Models

C6 Base Models

*w/OE discs



SPEC37 OE-FIT GT TRACK ROTORS

The championship proven performance of our Spec37 iron alloy is combined with lightweight aluminum hats in these extreme-duty rotor kits designed for competition with factory calipers.

- Directional-cooling vane design
- Asymmetrical cleaning slot pattern
- Precision machined and balanced

C5 All Models

C6 Base Models

C6 Z06/GS



SPECIAL APPLICATION BRAKES

Wilwood offers custom services covering options for anything from select powder coat colors to track-fortified kits for most years and models. Contact the Wilwood Technical Sales Support Team to discuss your particular needs.



DISC BRAKES
wilwood

DISC BRAKES
wilwood

CORVETTE BUYERS GUIDE FOR STREET & TRACK

CORVETTE PRODUCT GUIDE

- Big Brake Upgrade Kits
- Drum-to-Disc Conversions
- Direct-Mount Calipers
- OE-Fit Rotors and Pads

C1 1953 - 1962

C2 1963 - 1967

C3 1968 - 1983

C4 1984 - 1996

C5 1997 - 2004

C6 2005 - 2013

C7 2014 - 2019



4700 Calle Bolero
Camarillo, CA 93012
(805) 388-1188 | wilwood.com

Follow us on:



DYNALITE PRO-SERIES FRONT BRAKES

A complete front hub, rotor and caliper kit for drum-to-disc conversions for street or show customs, or as a lightweight alternative to stock for the strip.

- Dynalite four piston aluminum calipers
- Rotor diameter options from 11.00" to 12.19"
- Bolt-on installation with OE spindles

C1 '53-'62
C2 '63-'64*
C3 '69-'82

*w/OE drums



DYNAPRO 6A FRONT BRAKES

Get big brake stopping power and high-tech style to complement wheel and tire upgrades for your custom show or performance street machine.

- DynaPro 6A six piston calipers
- 12.19" diameter vented rotors
- Mounts direct to the OE spindle

C1 '53-'62*
C2 '63-'64*
C3 '69-'82**

*Special order available for '53-'64 C1/C2 w/OE drums

**w/OE discs



SUPERLITE 6R FRONT BRAKES

Two-piece rotor assemblies mount over the OE hub on factory disc brake cars for big braking power and high-tech style for customs and dual-sport street machines.

- Superlite 6R six piston calipers
- Choice of 12.88" or 14.00" diameter rotors
- Track upgrades available

C2 '65-'67*
C3 '68-'82
C4 '85-'96
C5 '97-'04
C6 '05-'13

*w/OE discs



AEROLITE 6R FRONT BRAKES

Aerolite 6R brake kits provide big brake stopping power, with high-tech style, for all types of street, custom, and dual-sport performance applications.

- Aerolite 6R six piston calipers
- Choice of 14.00" or 15.00" diameter rotor
- Full OE-system compatibility

C5 '97-'04
C6 '05-'13
C7 '14-'19

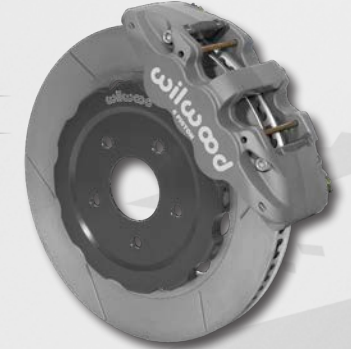


AEROLITE 6R/ST ROAD RACE BRAKES

Aerolite 6R/ST road race kits deliver championship performance and unyielding durability in all levels of club and professional motorsports competition.

- Aerolite 6R/ST race calipers
- Thermlock® pistons with dampers
- Dynamic mount 14.00" diameter GT rotors

C5 '97-'04
C6 '05-'13



PRO-SERIES FDL/DPLP REAR BRAKES

Convert your straight-axle rear from drums to discs with four piston calipers and an internal parking brake for all types of street or custom show machines.

- DynaPro LP or Dynalite calipers
- Choice of 11.00" or 12.19" diameter rotors
- No modifications to the OE axles

C1 '56-'62



SUPERLITE 6R FRONT BRAKES

Forged aluminum hubs on the OE drum brake spindles provide the base for ultimate big brake packages on high-end customs and dual-sport street machines.

- Superlite 6R six piston calipers
- Choice of 12.88" or 14.00" diameter rotors
- Built for 17" and larger wheels

C2 '63-'64*

*w/OE drums



SUPERLITE 4R REAR BRAKES

Complement your front brake upgrade with Wilwood style- and performance-matched bolt-on rear kits that retain full function of the OE parking brake.

- Superlite 4R four piston calipers
- Choice of 12.88" or 14.00" diameter rotors
- Autocross and race options available

C2 '65-'67*
C3 '68-'82
C4 '84-'96
C5 '97-'04
C6 '05-'13

*w/OE discs



AEROLITE 4R REAR BRAKES

Complement your Aerolite 6R or SX6R front brake upgrade with a style- and performance-matched Aerolite 4R rear kit using the factory parking brake.

- Aerolite 4R four piston calipers
- Two-piece 14.00" diameter rotors
- Full OE-system compatibility

C5 '97-'04
C6 '05-'13
C7 '14-'19



SX6R FRONT BRAKES

Speed Xtreme SX6R calipers with large diameter iron or WCCB carbon-ceramic rotors provide the ultimate options for dual-sport street and track super-cars

- SX6R six piston calipers
- Choice of 14.00" or 15.00" diameter options
- Dynamic mount two-piece rotors

C5 '97-'04
C6 '05-'13
C7 '14-'19*

*Iron discs only

