



GM D154 METRIC RACING CALIPERS

Wilwood GM D154 Metric Racing Calipers:

Whatever your category or rules, Wilwood offers GM Metric D154 pad racing calipers that deliver positive stopping power and optimized brake balance for all types of competition. These calipers are designed for direct mounting to all 1978 and later GM metric spindles, or fabricated brackets designed for the same 5.48" center to center floating style mounting pins.

Aluminum GM Metric Calipers

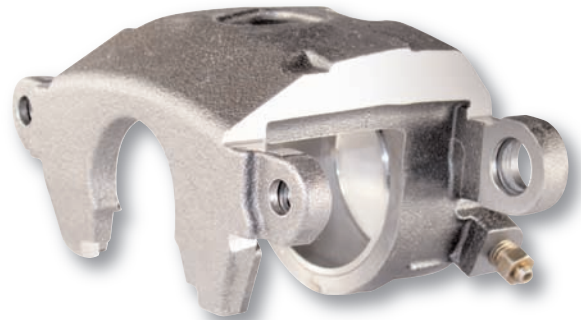
Lightweight and strong, these high density cast aircraft alloy aluminum calipers feature Wilwood's triple bridge design for the highest possible resistance to body separation and deflection under load. All load bearing and stress points have been fortified to maximize strength, and all unnecessary weight has been removed. Each caliper is assembled with a stainless steel piston and high temperature bore seal for the ultimate in heat control, corrosion resistance, and durability in extreme conditions.



Wilwood Aluminum Caliper

Iron GM Metric Calipers

When rules specify iron calipers, these OE style replacements provide customized piston sizes to fine tune bias and handling under braking. Each caliper is built with a stainless steel piston to minimize heat transfer from the pads, and a high temperature bore seal to provide long service life and durability in extreme conditions.



Wilwood Iron Caliper

D154 Brake Pads for GM Metric Calipers

Wilwood offers a full range of racing pad compounds for GM Metric calipers. For more information on pads and compounds, visit the brake pad listings in the motorsports product guide at www.wilwood.com.

Ordering Information, Aluminum Calipers:

<u>Bore Size</u>	<u>Disc Width</u>	<u>Caliper Part Number</u>	<u>Weight Lbs</u>	<u>Slide Pin Kit (4 pk)</u>
2.38" (60,5)	1.25" (31,8)	120-6427	3.4	230-0619
2.38" (60,5)	1.00" (25,4)	120-7197 ⁽¹⁾	3.4	230-0619
2.38" (60,5)	.81" (20,6)	120-6426	3.4	230-0619

Ordering Information, Iron Calipers:

<u>Bore Size</u>	<u>Disc Width</u>	<u>Caliper Part Number</u>	<u>Weight Lbs</u>	<u>Slide Pin Kit (4 pk)</u>
2.75" (69,9)	.81" - 1.00" (20,6 - 25,4)	120-8924	4.3	230-0619
2.75" (69,9)	.81" - 1.00" (20,6 - 25,4)	120-8926 ⁽¹⁾	4.3	230-0619
2.00" (50,8)	.81" - 1.00" (20,6 - 25,4)	120-9333	4.3	230-0619
2.00" (50,8)	.81" - 1.00" (20,6 - 25,4)	120-9487 ⁽¹⁾	4.3	230-0619

Notes: (1) These calipers feature slide pin vibration dampeners