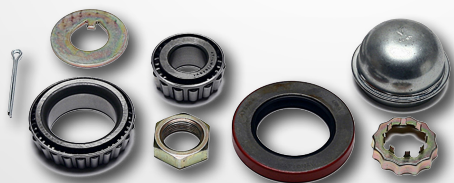




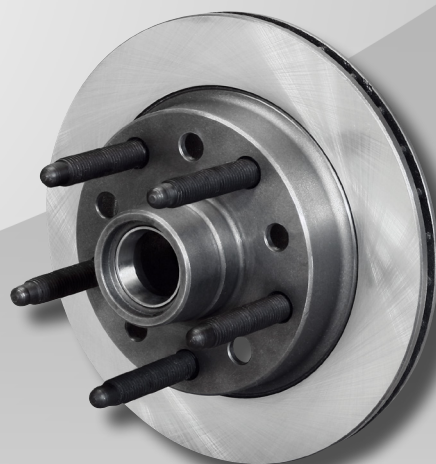
P/N 160-9239LS



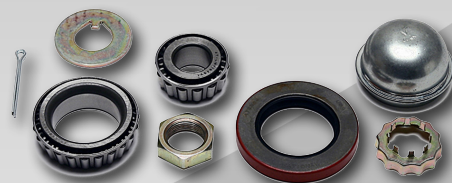
INSTALLATION KIT: Includes inner and outer bearings, dust cap, seal and spindle nut hardware
P/N 370-9537

GM-METRIC RACING ROTOR

- OEM replacement racing rotor fits 1979 - 1988 GM spindles
- Strong, lightweight and dependable rotors trusted by racers
- 10.50" diameter, 1.00" width, 32-vane, 5 x 5.00" bolt pattern
- LS - Long Stud, 3.14" exposed wheel studs allow use of popular spacers



P/N 160-9240LS



INSTALLATION KIT: Includes inner and outer bearings, dust cap, seal and spindle nut hardware
P/N 370-9545

HYBRID FORD RACING ROTOR

- OEM replacement racing rotor fits 1974 - 1980 Pinto spindles
- Strong, lightweight and dependable rotors trusted by racers
- 10.15" diameter, 0.81" width, 32-vane, 5 x 5.00" bolt pattern
- LS - Long Stud, 3.14" exposed wheel studs allow use of popular spacers

ORDERING INFORMATION: Long Stud Rotors

PART NUMBER	DESCRIPTION
160-9239LS	GM-Metric Long Stud Rotor, 10.50" 32-Vane ULHP Plain Face Rotor
160-9240LS	Hybrid Ford Long Stud Rotor, 10.15" 32-Vane ULHP Plain Face Rotor
370-9537	GM-Metric Bearing & Hardware Kit
370-9545	Hybrid Ford Bearing & Hardware Kit