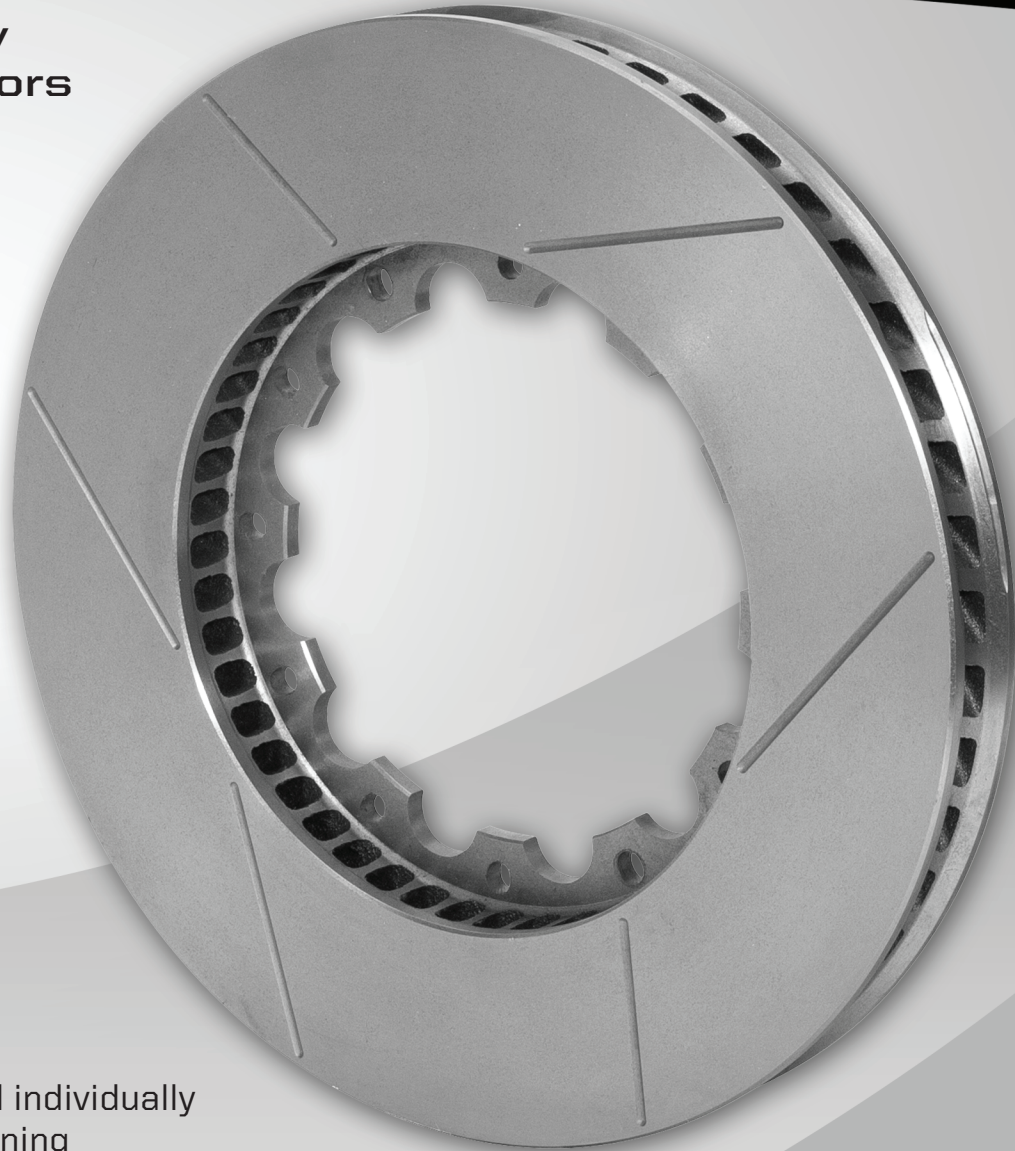


Wilwood's **Spec37** Alloy GT Series Racing Rotors

NEW SIZES AVAILABLE

- Featuring oval slot mounting holes required for use with bobbin-style dynamic-float mounting
- High-durability and thermal stability resists distortion and fatigue
- High-efficiency directional vane design optimizes cooling without adding weight
- Asymmetrical slot pattern eliminates engagement harmonics and preserves pad performance
- Close-tolerance machined and individually dynamic balanced for true running without vibration
- Advanced casting technology with state-of-the-art foundry processes produce precision castings
- Available in standard machine finish or dyno-bedded using Wilwood's computer-controlled bedding process
- Fully compatible with all Wilwood and competitor's pad compounds formulated for cast iron rotors



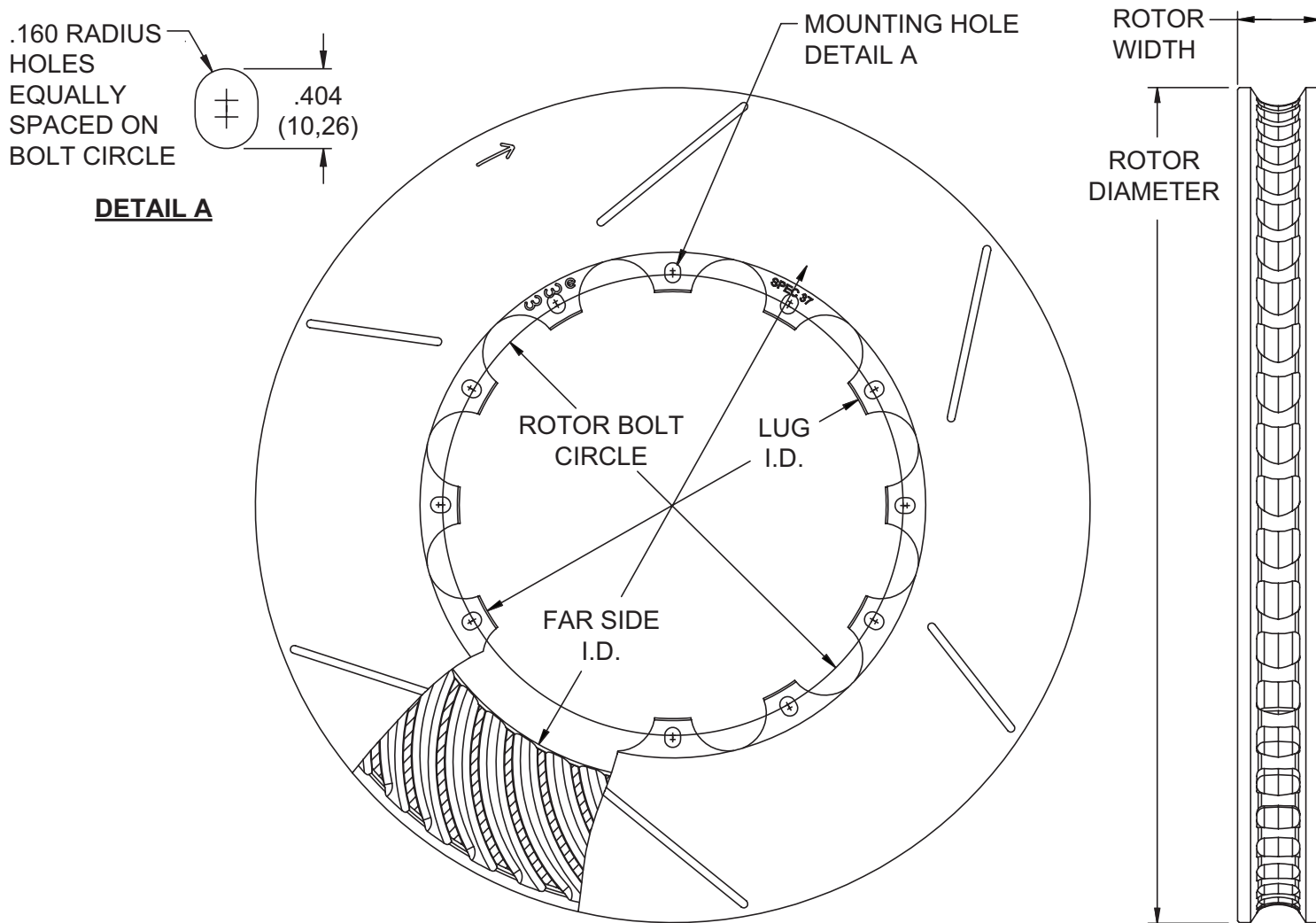


Figure 1. Dimensional Characteristics
(Showing 12 Bolt Pattern)

ORDERING INFORMATION: Slotted Hole Bobbin Type Floating Rotors*

PART NUMBER	ROTOR DIA.	ROTOR WIDTH	ROTOR B. C.	ROTOR MATERIAL	ROTOR STYLE	ROTOR FINISH	VANE COUNT	HOLE TYPE	LUG I.D.	FAR SIDE I.D.	MOUNT SIDE
160-15256	12.91" (327,9)	1.26" (32,0)	12 x 7.24" (183,9)	Spec37 Iron	GT Slotted	Plain	48 CV	0.404" (10,3)	6.33" (160,8)	7.88" (200,2)	R/H
160-15257	12.91" (327,9)	1.26" (32,0)	12 x 7.24" (183,9)	Spec37 Iron	GT Slotted	Plain	48 CV	0.404" (10,3)	6.33" (160,8)	7.88" (200,2)	L/H
160-6843	12.91" (327,9)	1.38" (35,1)	12 x 7.24" (183,9)	Spec37 Iron	GT Slotted	Plain	48 CV	0.404" (10,3)	6.25" (158,8)	7.88" (200,2)	R/H
160-6844	12.91" (327,9)	1.38" (35,1)	12 x 7.24" (183,9)	Spec37 Iron	GT Slotted	Plain	48 CV	0.404" (10,3)	6.25" (158,8)	7.88" (200,2)	L/H
160-7137	12.91" (327,9)	1.26" (32,0)	10 x 8.11" (206,0)	Spec37 Iron	GT Slotted	Plain	48 CV	0.404" (10,3)	7.24" (183,9)	8.66" (220,0)	R/H
160-7138	12.91" (327,9)	1.26" (32,0)	10 x 8.11" (206,0)	Spec37 Iron	GT Slotted	Plain	48 CV	0.404" (10,3)	7.24" (183,9)	8.66" (220,0)	L/H
160-15258	12.19" (309,6)	1.26" (32,0)	12 x 7.33" (186,2)	Spec37 Iron	GT Slotted	Plain	48 CV	0.404" (10,3)	6.33" (160,8)	7.88" (200,2)	R/H
160-15259	12.19" (309,6)	1.26" (32,0)	12 x 7.33" (186,2)	Spec37 Iron	GT Slotted	Plain	48 CV	0.404" (10,3)	6.33" (160,8)	7.88" (200,2)	L/H
NEW 160-16027	11.75" (298,5)	1.25" (31,8)	8 x 7.05" (179,1)	Spec37 Iron	GT Slotted	Plain	48 CV	0.320" (8,1)	6.38" (162,1)	7.69" (195,3)	R/H
NEW 160-16028	11.75" (298,5)	1.25" (31,8)	8 x 7.05" (179,1)	Spec37 Iron	GT Slotted	Plain	48 CV	0.320" (8,1)	6.38" (162,1)	7.69" (195,3)	L/H

*For dyno-bedded rotors, add -B to end of part number when ordering